

# inside halton

[www.halton.gov.uk](http://www.halton.gov.uk)



YOUR FREE MAGAZINE FROM  
HALTON BOROUGH COUNCIL  
WINTER 2018-19

  
**HALTON**  
BOROUGH COUNCIL

# F<sup>4</sup>OSTER

Spare  
room?

## We're recruiting!

Could you become a registered foster carer with your Local Authority?

Fostering families come in all different shapes and sizes. You don't need any special qualifications, we provide you with exceptional training, support and benefits, and you provide children and young people with nurturing care when they need it most.



### Who are we?

Foster4 is a new, collaborative project between Cheshire East Council, Cheshire West and Chester Council, Halton Borough Council and Warrington Borough Council. We're working together, pooling resources and expertise to recruit more foster carers across Cheshire and provide even greater support, training and benefits to our existing ones.

### Did you know?

As a registered foster carer for your Local Authority, you can decide the type of fostering you'd like to do - short term, long term, emergency or respite care, and the age range of children you'd like to care for, or be completely open-minded!

### Did you know?

We provide all the equipment you will need including beds, bedroom furniture or prams for example, as well as a generous weekly allowance.

### Feeling inspired?

Visit: [www.foster4.co.uk](http://www.foster4.co.uk) request an information pack, or alternatively give the team a call on **01925 444100** for an informal chat.

#flexibleworking #homebased #selfemployed

Like us on Facebook [foster4cheshire](https://www.facebook.com/foster4cheshire)

# Message from the Council Leader



**Welcome to our winter edition in which we commemorate the last year of the World War One centenary and give thanks to all those who played a part in that conflict.**

We are one year on from the opening of the Mersey Gateway Bridge and the benefits it is already bringing to Halton in terms of transportation, job creation and inward investment have surpassed our expectations.

The opening of the new bridge has made it possible to carry out much-needed renovation work on the Silver Jubilee Bridge and to improve the roads around Runcorn Station making it easier to connect with the town centre, and enable opportunities for future developments in the 'Station Quarter'.

Halton is proud to have a tremendously diverse range of thriving businesses in the borough – many that people probably do not realise are here. Starting in this issue we take a brief look at a few of our commercial gems.

Elsewhere we have important advice for staying warm and well during the winter months, and full calendar of activities and events throughout the next few months.

The festive season will soon be upon us, so it just leaves me to wish you and your families a happy and peaceful Christmas and New Year.

**Cllr Rob Polhill** Council Leader

# Contents



07

**07** To celebrate the 100th anniversary of Runcorn's iconic railway bridge, the historic fog bell which sat on top of the bridge has been restored and is now on permanent display at The Brindley Theatre.

**13** As the rising costs of a funeral leave many bereaved families in debt, Halton Council has teamed up with a local funeral director to provide a fixed, low-cost funeral for Halton residents.



13

## Also in this issue...

- 08** Health Improvement
- 11** Halton Libraries
- 12** Cheshire Police
- 14** Mersey Gateway
- 22** Beauty & The Beast
- 23** What's On
- 26** Council meetings and useful numbers
- 27** Councillors' surgeries
- 28** Halton Transport



16

**16** From small local firms, to world leaders in science and manufacturing, Halton has it all. Our two-part series reminds us what a thriving business community we have.



inside **halton**

is produced by Halton Borough Council. Previous issues can be viewed at: [www.halton.gov.uk](http://www.halton.gov.uk) and audio versions are available on request. Contact: Gill Cook. Tel: 0151 511 7770 e-mail: [gill.cook@halton.gov.uk](mailto:gill.cook@halton.gov.uk)

Designed by Fractal Creative Ltd, Prescot. Tel: 07941 568454 e-mail: [fractalcreative@virginmedia.com](mailto:fractalcreative@virginmedia.com)



**recycle for Halton**

When you have finished with this magazine please recycle it

# Special thanks for Caring Sylvia

Long-serving Adult Placement Carer, Sylvia Roberts, has been awarded a Certificate of Recognition from Halton Council, presented to her by the Mayor and Mayoress.

**Adult Placement Carers are carers in their own home for adults who need support due to age, illness or disability. Sylvia used to work as a Care Assistant for people with Alzheimer's and dementia, helping them wash and dress and looking after their health and wellbeing. After a short retirement, she saw an advert at Widnes Library asking for people who have a few hours to spare.**

Following an assessment, Sylvia started working as an adult placement carer in July 2002 and 16 years later, she supports three people at a time in her own home, where they spend time chatting, laughing and watching TV with other family members. Sylvia said that she receives a lot of satisfaction from this type of work as she wants to be involved in supporting people who wish to remain in the community.

Not one to be left behind by the technology revolution, Sylvia has undertaken online training and achieved an online Care Certificate.

She is considering a second retirement when she reaches 80, but says it all depends on her health.

Stiofan O'Suillibhan, Divisional Manager of Adult Social Care, said: "People like Sylvia are very hard to find. Committed to caring for others and a sense of humour are some of Sylvia's many attributes and we are very lucky that she saw our advert."

For anyone wishing to become a carer in their own home, full training is provided and, once approved, the carer's position comes with a tax-free payment depending on the number of people cared for.

Executive Board Member for Families, Cllr Tom McInerney, said: "We are looking towards a time when our adult care service will come under greater pressure due to Halton's population becoming ever older and demands for our services increase. We need carers to look after people within their own families now more than ever. Feeling part of a family in the carer's home is a well-known route to keeping them active and in good health."



For details of the Adult Placement Carers Scheme visit [www3.halton.gov.uk/Pages/adultsocialcare/adultplacement.aspx](http://www3.halton.gov.uk/Pages/adultsocialcare/adultplacement.aspx) or call 0151 511 6677.

# Fairytale of New York & Widnes

When Halton Council received a request for a new Albert Road street sign there seemed nothing unusual about it - at first.

**In this case it was requested by an Italian-American family from New York and, after hearing the family's saga, the Council gifted the sign to them.**

In 1955 when Joseph DeClemente of New Rochelle, New York, was stationed with the US Air Force at Burtonwood, he met Marie Owens from Albert Road, Widnes.

His son Steve says: "Even though my Dad was a typical "Yank" in so many ways, he embraced English culture and fell in love with my Mom. Her family loved him too, but nobody really thought the relationship was going to amount to anything."



DeClemente family photographs

Homesick, Marie returned with the baby to her home on Albert Road vowing never to go back. Joseph, only weeks into his job as an aircraft mechanic, was forced to borrow money and return to Widnes. With the help of Marie's family and friends he convinced her to return to New York with the promise that they would visit Widnes every year. The couple had two more children, Janice and Todd.

Steve said: "Our family pretty much holidayed in Widnes every year - I always looked forward with such excitement to return to my second home."

Planning for their retirement the couple bought a home in Florida. Sadly, Marie passed away last year. Now, Joseph owns a small farm in Florida with its own private road, and

Steve said it came as no surprise to discover what he wanted to rename the road.

"Well it only took one guess - Albert Road! It represents his love, our families' love, and many memories of Widnes, which will never be forgotten, and our hope is to one day hang a real Albert Road sign on his private road."

And now they can, as the special sign has been taken by a family member all the way from Widnes to Florida!



David Brandreth (right), grandson of Marie Owens' sister, with Halton Council's Iain Dignall

In 1958 it was announced that most US Forces operations at the airbase were to end and with Joseph about to return to the US, he knew he couldn't leave Marie behind and, in April 1958, the couple married at St Bede's Catholic Church.

Within a few months and expecting their first child, they left Widnes to start married life in New York where Steve, the first of three children was born. But New York life was a culture shock for a 19-year-old Widnes girl - it was a world away from the home she knew and her loving family.

# Lest we forget...

## 100 years since Armistice Day 1918



To mark the 100th anniversary of the end of World War I, Halton has been remembering and thanking those who served during the conflict.



Halton Borough Council and the local Royal British Legion commemorated the centenary with events enabling Halton residents to reflect on the

huge sacrifice that so many made during the Great War.

'Silent Silhouettes' of First World War soldiers were placed around the borough, and work began to clean up the borough's war memorials.

Work is being done to restore and clean the War Memorials in Widnes, Runcorn and Hale. This has been part funded by a grant from the War Memorial Trust of £11,750 with the rest provided by the Council. Work includes careful cleaning and re-pointing of the masonry. The bronze plaques

and cast iron wreaths on the Widnes Cenotaph have been cleaned and re-waxed and all inscriptions cleaned.

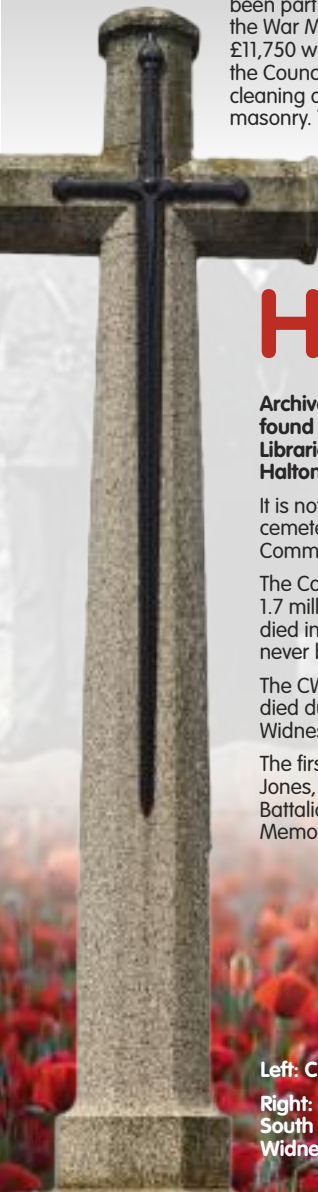
The silhouettes have been on display around the borough to symbolise the communities that took part in WWI and shaped the nation as we know it today, including British and Commonwealth soldiers, those who gave medical support, RAF/RFC, Navy, munition factory workers and suffragettes. Each of the Council's Area Forums funded silhouettes in their area.

Council Leader, Cllr Rob Polhill, said: "I am so pleased that we are sponsoring the Silent Silhouettes, and have also repaired and cleaned the main war memorials to commemorate the 100th anniversary of the end of World War One.



Cllr Rob Polhill and one of the Silent Silhouettes

"The Silent Silhouettes are the idea of The Royal British Legion as a 'Thank You' to the First World War generation who served, sacrificed, rebuilt and changed the nation. I think they are a great idea as they allowed communities to show their gratitude and have also raised funds towards the work that the Legion does day in day out to support service personnel, veterans and their families."



## Discover more about Halton's part in World War One

Archives of material from the First World War period can be found in the extensive collection of material held in Halton Libraries, and the graves of some of the fallen can be found in Halton cemeteries.

It is not well known that there are more than 178 graves in Halton cemeteries which are tended by the Commonwealth War Graves Commission. Of these, 105 relate to those killed in World War One.

The Commonwealth War Graves Commission (CWGC) honours the 1.7 million men and women of the Commonwealth forces who died in the First and Second World Wars, and ensures they will never be forgotten.

The CWGC website shows that in total 455 military personnel who died during the First World War had connections or were born in Widnes and 284 from Runcorn.

The first soldier from Runcorn to die in battle was Private Joseph Jones, aged 30 who died 24th August 1914. He served in the 1st Battalion Cheshire Regiment. He is buried in La Ferte-Sous-Jouarre Memorial, France.

The first from Widnes to die in Battle was Charles Reynolds on 15th September 1914. He served with 22 Battery Royal Field Artillery and he too is buried in La Ferte-Sous-Jouarre Memorial, France.

The first soldier to die and is buried in Widnes Cemetery is Sapper B. Jones of the 2nd Field Company Royal Engineers. In Runcorn, the grave of John Cameron, age 19 who served with the 1st Battalion Seaforth Highlanders is the earliest on record. In Halton Cemetery, the earliest recorded soldier's grave is 2nd Lt H Shaw, who served with the Tank Corps.

Every grave is marked with a headstone featuring the national emblem or regimental badge, rank, name, unit, date of death and age of each casualty inscribed above an appropriate religious symbol and a more personal dedication chosen by relatives.

For more information about the graves of the fallen in Halton and the history of local cemeteries, go to [www.halton.gov.uk/cemeteries](http://www.halton.gov.uk/cemeteries)

Photographs from WWI and many others can be found at [www.picturehalton.org](http://www.picturehalton.org) and you can also buy copies of the pictures.

Left: Cross of Sacrifice

Right: 5th battalion, South Lancs Regiment, Widnes



CROSS OF SACRIFICE IS SET IN PERMANENT ATTENTION WITH THOSE WHO HAVE LAIN IN FRANCE AND THOSE WHO LIE IN OTHER PLACES THROUGHOUT THE WORLD WHERE OUR DEAD OF THE GREAT WAR ARE LAID TO REST



**WIDNES MARKET**

# What Can I Buy at Widnes Market

**P Free Parking**

**OPEN: MON, WED, THURS, FRI, SAT**

**FLEA MARKET EACH WEDNESDAY**

- |                                  |                                       |                                  |
|----------------------------------|---------------------------------------|----------------------------------|
| Alternative Clothing             | Dvd's & Music                         | Kitchen Units                    |
| Baby Bedding & Accessories       | Delicatessen                          | Men's, Ladies & Children's Shoes |
| Baby Clothing                    | Electronic Cigarettes                 | Menswear                         |
| Barbers                          | Embroidery & Needlecraft              | Mobile Phone                     |
| Blinds & Window Coverings        | Eyebrow Bar                           | Repairs & Accessories            |
| Books                            | Fabrics & Cloth                       | Work Wear                        |
| Butchers                         | Fashion Clothing                      | Nail Bar                         |
| Buttons Zips & Fasteners         | Fires & Fireplaces                    | Opticians                        |
| Café                             | Fish & Seafood                        | Perfumes & Cosmetics             |
| Cards, Balloons & Wrapping Paper | Flea Market                           | Pet Foods & Accessories          |
| Carpets & Flooring               | Flowers & Plants                      | Stop Smoking Advice              |
| Children's Clothing              | Fresh Meat & Poultry                  | Sweets                           |
| Clock and Watch Repairs          | Fruit & Vegetables                    | Home Decor                       |
| Clothing Repairs & Adjustment    | Guitars And Musical Instruments       | Tools & Homewear                 |
| Crafts & Bead Supplies           | Hair Accessories                      | Underwear                        |
| Cake Decorating Supplies         | Hair Salon                            | Widnes Vikings Merchandise       |
| Crystals & Spiritual Items       | Handbags & Luggage                    | Wigs and Hair Extensions         |
| Curtains & Nets                  | Heel Bar                              | Wool & Knitting                  |
| Decorating & Wallpaper           | Household Goods                       | Wooden Flooring                  |
|                                  | Information & Advice for Older People | Vitamins & Supplements           |
|                                  | Jewellery & Watches                   |                                  |
|                                  | Keys & Engraving                      |                                  |



Widnes Market, Bradley Way,  
Widnes, Cheshire, WA8 6UE.

[www.widnesmarket.com](http://www.widnesmarket.com)



# Historic bell restored as railway bridge is renovated



An historic bell which sat on top of Runcorn's iconic railway bridge has been restored by Network Rail and put on display at The Brindley Theatre to mark the 150th anniversary of the opening of the bridge.

The bell, which used to sound when there was fog to warn approaching ships on the Manchester Ship Canal of the Runcorn viaduct's location, was removed and repaired by Network Rail as part of their £6m renovation of the viaduct and donated to Halton Borough Council to be put on permanent display.

Council Leader, Cllr Rob Polhill, says: "We are delighted to have the Navigation Fog Bell here at The Brindley. It is an item of historical significance and we are grateful to Network Rail for restoring it to its former glory so it can be enjoyed by future generations."

Helena Williams, Scheme Project Manager at Network Rail, said: "We've been working in the area for just over a year as part of our £6m project to repair and restore Runcorn viaduct. This work has been vital to help keep this busy railway bridge, that is well used by freight and passenger services, reliable and safe for years to come."

The bridge, which spans the River Mersey between Runcorn and Widnes, was opened by the London & North Western Railway on 10 October 1868. The Grade II listed structure was officially named Runcorn Bridge, but known locally as Aethelfleda Bridge after the Queen of the Mercians. Remains of a fort dating from her era had been uncovered during the construction. As the bridge also bears an image of Britannia, it is often called Britannia Bridge.

In the mid-19th Century, the River Mersey was still being used by a large number of boats and ships. Navigational aids – lighting and the fog bell – were installed to stop vessels colliding with the bridge. In 1894, the Ship Canal opened and that resulted in a decline in traffic on the



River Mersey. The navigation fog bell had fallen out of use by the mid-20th Century.

The bell was unveiled by Halton's Mayor and Mayoress, Cllrs John and Marjorie Bradshaw, along with children from Runcorn All Saints CE Primary School who worked on a railway bridge project with Network Rail.



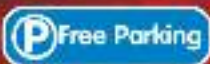
## WIDNES MARKET CHRISTMAS OPENING DAYS

MONDAY 17TH DECEMBER	OPEN
TUESDAY 18TH DECEMBER	OPEN
WEDNESDAY 19TH DECEMBER	OPEN
THURSDAY 20TH DECEMBER	OPEN
FRIDAY 21ST DECEMBER	OPEN
SATURDAY 22ND DECEMBER	OPEN
SUNDAY 23RD DECEMBER	OPEN
MONDAY 24TH DECEMBER	OPEN
TUESDAY 25TH DECEMBER	CLOSED
WEDNESDAY 26TH DECEMBER	CLOSED
THURSDAY 27TH DECEMBER	CLOSED
FRIDAY 28TH DECEMBER	OPEN
SATURDAY 29TH DECEMBER	OPEN
SUNDAY 30TH DECEMBER	CLOSED
MONDAY 31ST DECEMBER	CLOSED
TUESDAY 1ST JANUARY	CLOSED
WEDNESDAY 2ND JANUARY	OPEN



## FREE SANTA'S GROTTTO

- SATURDAY 1ST DECEMBER
- SATURDAY 8TH DECEMBER
- SATURDAY 15TH DECEMBER
- SATURDAY 22ND DECEMBER
- SUNDAY 23RD DECEMBER



[www.widnesmarket.com](http://www.widnesmarket.com)



**HELP US  
HELP YOU**  
STAY WELL THIS WINTER

**Children aged 2 or 3, pregnant women, people with long-term health conditions and those aged 65 or older should get their free flu vaccine**



**Pregnant women, children aged 2 and 3 years old and adults with underlying health conditions and older people are at particular risk from flu and vaccination is still the best protection we have against an unpredictable virus.**

- That's why the flu vaccine is free – because you really need it.
- Who is eligible for the free vaccine?
- If you have a long term health condition

Flu is a highly infectious disease and can lead to serious complications if you have an underlying health condition such as COPD, bronchitis, emphysema, diabetes, heart disease, kidney disease, liver disease or a chronic neurological disease like multiple sclerosis or cerebral palsy.

### If you are 65 and over...

The flu vaccination continues to be available to adults aged 65 years old and over, who are more vulnerable and may suffer more than most people if they catch flu. This year a more effective vaccine is being given to those aged 65 and over, which is proven to give better protection against flu for people of this age.

### Children...

Flu can be nasty for little children. Children also tend to be super-spreaders of flu so if they get it, they are likely to infect more vulnerable older family members. The flu vaccine will help protect your child from flu and also reduce the chance of it spreading on to others.

For most children, the flu vaccine is not usually an injection, just a quick and easy nasal spray. Children aged 2 and 3 receive the vaccine through their GP and children reception and school years 1, 2, 3, 4 and 5 receive it in school.

If you have a child who is of the eligible age, make sure you sign the consent form allowing them to have the flu vaccine at school.

### If you are pregnant...

Pregnancy naturally weakens the body's immune system and as a result flu can cause serious complications for you and your baby.

The flu jab is the safest way to help protect you and your baby against flu, no matter how many months pregnant you are or however fit and healthy you may feel. If you are eligible for the flu vaccine, get it now.

### If you provide care for someone...

If you are the primary carer for someone in a risk group you can also get the flu vaccine for free. You may be at risk of passing flu to the person you care for. You can pass flu on even if you don't have symptoms yourself. It's also worth thinking about how that person may manage if you are ill and out of action.

If you are paid to provide care for someone in a care home, through a care agency or in a hospice, you can also get the vaccine free if you take evidence of employment (an ID card, payslip or letter from your employer) – ask at your GP or local pharmacy.

Even if you don't fall into any of these categories, flu can be quite unpleasant. You can pay to get the flu jab at your local pharmacy, prices seem to range from £5 to around £12.

**Contact your general practice, pharmacist or midwife to get it. Visit [www.nhs.uk/flu vaccine](http://www.nhs.uk/flu vaccine) for more information.**

## Worried about paying your heating bills this winter?

**For many people the onset of winter can mean huge rises in energy bills. For those living on benefits or low incomes this can lead to significant hardship. Living in a cold home increases your risk of becoming ill, particularly if you are older, very young or already suffering from poor health.**

But there are many schemes in Halton that can help you save money on your gas and electric bills, insulate your home and get your heating systems checked. Many of these are free if you are eligible.

The Save Energy Advice Line and Citizens Advice Halton provide free, impartial advice on energy bills and can help you find out if you are eligible for additional financial help.

**Save Energy Advice Line – 0800 043 0151  
Citizen's Advice Halton – 0344 477 2121**

If you rent your house, contact your landlord. They have a legal duty to ensure that your heating system is in good working order, even private landlords.

Social Housing providers can often provide their tenants with advice and help too.

For more details and phone numbers you can call for advice and information see [www.hit.activehalton.co.uk/winter-warmth/](http://www.hit.activehalton.co.uk/winter-warmth/)

### Money saving energy scheme - Collective Switch

Thousands of people across the region have joined the Collective Switch to get a better deal on their energy bills. Together they have saved over £1 million since 2013! By joining the scheme you will get exclusive offers on energy tariffs, often the best on the market and only open to members.

The more people who take part, the better the deal we'll get, so join in and don't forget to tell your friends! Register by calling

**Freephone 0800 043 0151 or  
visit [www.LCRenergyswitch.co.uk](http://www.LCRenergyswitch.co.uk)**





# Top Tips for staying healthy this winter

- Get your flu jab if you are eligible. It's free if you are in one of these at risk groups. Speak to your GP or pharmacist for more information.
- Keep your bedroom windows closed at night to keep out draughts.
- Make sure you have enough food and supplies in the house if a cold snap is forecast.
- If you take any medications make sure you take them regularly and have enough in stock in case you can't get out of the house.
- It's important to keep your home warm. If you are having trouble with your heating system or you are struggling to pay your bills, you can get help from local organisations.

## New Year, New Start...

After the inevitable excesses of the festive season, New Year is a time for fresh starts, resolutions and those lifestyle changes you've been talking about all year.

It's easy to make a resolution but much harder to find the willpower and motivation to stick with it and see it through.

It's a proven fact that quitting smoking through willpower alone is the least effective way of quitting, you are far more likely to relapse. Using nicotine replacement therapies (NRT) doubles your chances of quitting, while using your local Stop Smoking Service means you are 4 times more likely to quit for good, with the combination of NRT and motivational help and advice from the team. If you find you are on the verge of relapsing, the team can help you work through the tough times and if necessary find a different method of quitting.

Likewise, if you want to lose weight or get fitter, doing it alone can be hard. Which diet is best? What will work for me? I've tried dieting before but couldn't stick with it. If that sounds like you, then our Fresh Start programme could be the answer.

Fresh Start takes place in local venues around Halton and is free for 6 months. The weekly sessions include an interactive group talk where you can discuss progress, get advice and share hints and tips with other clients. Our team of Health Trainers and Lifestyle Advisors are there to help you find a solution that works for you and keep you motivated to carry on. The classes also include a physical activity session for those who are able to take part.

For more information about our Health Improvement Services call 0300 029 0029 or visit [www.haltonhealthimprovement.co.uk](http://www.haltonhealthimprovement.co.uk)



## Have YOU had your FREE NHS Health Check?

Could you be one of the thousands across Halton with undiagnosed high blood pressure or diabetes?

If you're age between 40 and 74 you might be eligible for a FREE NHS Health Check.

The NHS Health Check will tell you the risk of you developing diabetes, heart disease, kidney disease, stroke and dementia and if there are any warning signs, you'll be given help and advice on what you can do to improve your health.

The check should take about 30 minutes and is based on straightforward questions and measurements such as age, gender, family history, height, weight and blood pressure. You will also be given a simple blood test to measure your cholesterol and blood sugar.

You should receive an invitation from your GP every five years to attend a free health check at your surgery. If you'd like to find out more, speak to your GP to find out if they can offer you a health check.

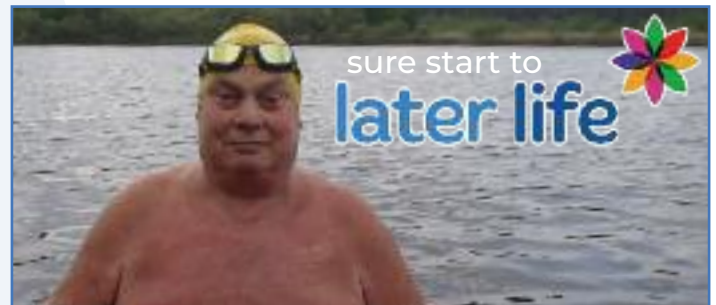
They will also be able to tell you more about our lifestyle services such as Fresh Start, our Stop Smoking Service or our exercise programmes.

Also keep an eye on our Facebook page for details of local 'Healthy Halton' events organised by the Halton Health Improvement Team. They will be at various events and venues, including local businesses, throughout the year offering free BP and lung age checks as well as full NHS Health Checks for eligible people and advice on improving your health and wellbeing.

## Thanks to volunteers from Sure Start to Later Life, Peter finds a NEW lease of life!

Peter spent a period of time in the hospital due to heart failure. When he was discharged he says he was practically housebound. A visit from the team at Sure Start to Later Life was arranged to see if there was anything they and their volunteers could do to help.

During the visit, Peter mentioned that he had always been passionate about swimming but was unable to get to public transport to get to the pool. He also couldn't afford the taxi fare.



Seeing how getting out of the house and more active could improve Peter's health and wellbeing, the Sure Start team added him to their volunteer matching list.

The scheme matches people with someone who can help in any number of ways – driving to appointments, help with shopping, even just a friendly chat over a cuppa.

The scheme matched Peter with Colin who drives Peter to the pool every week. Colin takes Peter swimming once a week to both indoor pools and fresh water lakes to swim. Within a few months, Peter has gone from being almost housebound to being able to swim a mile nonstop! When he first met Colin he could only manage 2 lengths at the pool.

Getting fitter has had a huge impact on other areas of Peter's life too. He can now walk to the pharmacy to pick up his prescription instead of getting it delivered.

Peter feels that since Colin's involvement his quality of life and independence has increased hugely. Not only does Colin accompany Peter swimming but he also volunteered to drive Peter to a very important medical appointment to reset his heart device. This appointment had previously been cancelled as Peter was unable to get there. For Colin too, the scheme has brought many benefits. Spurred on by Peter, he has also taken up swimming and is enjoying his new hobby.

The Sure Start to Later Life team has also helped Peter apply for additional benefits he is entitled to.

Peter is clear about how the service has changed his life. "Without the help of the Sure Start team and Colin, I would be stuffed!"

**Sure Start to Later Life offers a range of service and activities to Halton residents aged 55 and over. For full details call 01928 569498 or visit [www.halton.gov.uk/ss2li](http://www.halton.gov.uk/ss2li)**





Please don't be offended if they ask what the problem is when you next call to make an appointment at your GP practice.

This is called Care Navigation and it's about helping you get to the service you need.

The Care Navigator might suggest services that could help you better.

Of course, you don't have to do this, but it would help us to help you and other patients.

Pharmacy

Health & Wellbeing services

Sexual Health

Musculoskeletal (MSK)

Opticians

**Care Navigation**

# Halton Libraries

## Children rise to the Summer Reading Challenge

A record number of Halton school children completed the Summer Reading Challenge and read six books over the summer holidays.

By continuing to read for pleasure over the long holidays, children continue to develop their literacy skills – and most of all, have fun doing it! More than 700 children succeeded in finishing the challenge and were rewarded with a certificate and medal.

This year, Halton libraries also ran a summer lunch club once a week in Halton Lea and Widnes libraries after summer reading challenge activities. Children attending events received a free packed lunch to enjoy in the library afterwards while reading a book. Over 650 children benefitted from these free lunches, helping to relieve the strain on families' budgets.

If you missed out on 2018's Summer Reading Challenge, don't worry, you can still join in the fun. There are Chatterbooks sessions every week for 7-11 year olds to share their love of books, Mondays 4-5pm at Widnes Library and Thursday 4-5pm at Halton Lea Library.



## CSI Evening with Ashley Dyer

Friday 8 February, 7-8.30pm, Widnes Library. Tickets £3 / £2 library members, book online via the library website or at your local library.



**This event is a must for all crime fans, a fascinating evening looking at how the real forensic experts deal with a crime scene and how crime writers make sure they get the facts right.**

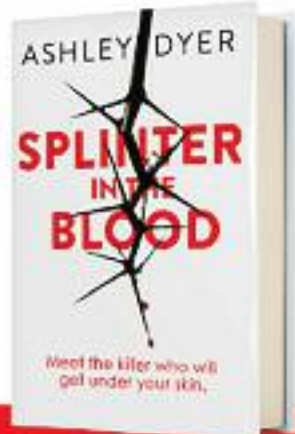
Examine the evidence at our 'crime scene' and chat with the writer and the forensic expert, who together form Ashley Dyer. Pit your wits against the experts in this fun, friendly event and see if you can find clues that could help to solve a major crime.

Ashley Dyer is the pseudonym for novelist Margaret Murphy working in consultation with policing and forensics expert, Helen Pepper. Margaret Murphy is a past Chair of the Crime Writers

Association (CWA), and founder of Murder Squad. A CWA Short Story Dagger winner, she has been shortlisted for the CWA Dagger in the Library. She has written novels under her own name, and as A.D. Garrett.

Helen Pepper is a Senior Lecturer in Policing. She has been an analyst, Forensic Scientist, Scene of Crime Officer, CSI and Crime Scene Manager. Her expertise is in great demand with crime writers. Helen is also a judge for the CWA's Non-Fiction Dagger award, and is Forensic Consultant on both the Vera and Shetland television series.

Copies of Ashley Dyer's Splinter in the Blood will be sold on the evening.



## Free eAudiobooks

Liven up your commute with a talking book to keep you company. You can download free talking books onto your phone with Halton Library Service's audiobook service.

Have you heard a good book lately?



Visit [www.halton.gov.uk/e-audio](http://www.halton.gov.uk/e-audio) to find out more. There is a great selection of titles to choose from, including modern fiction, biographies, thrillers and children's titles. Don't worry about fines as the books will automatically return themselves after three weeks!

## Talking Science

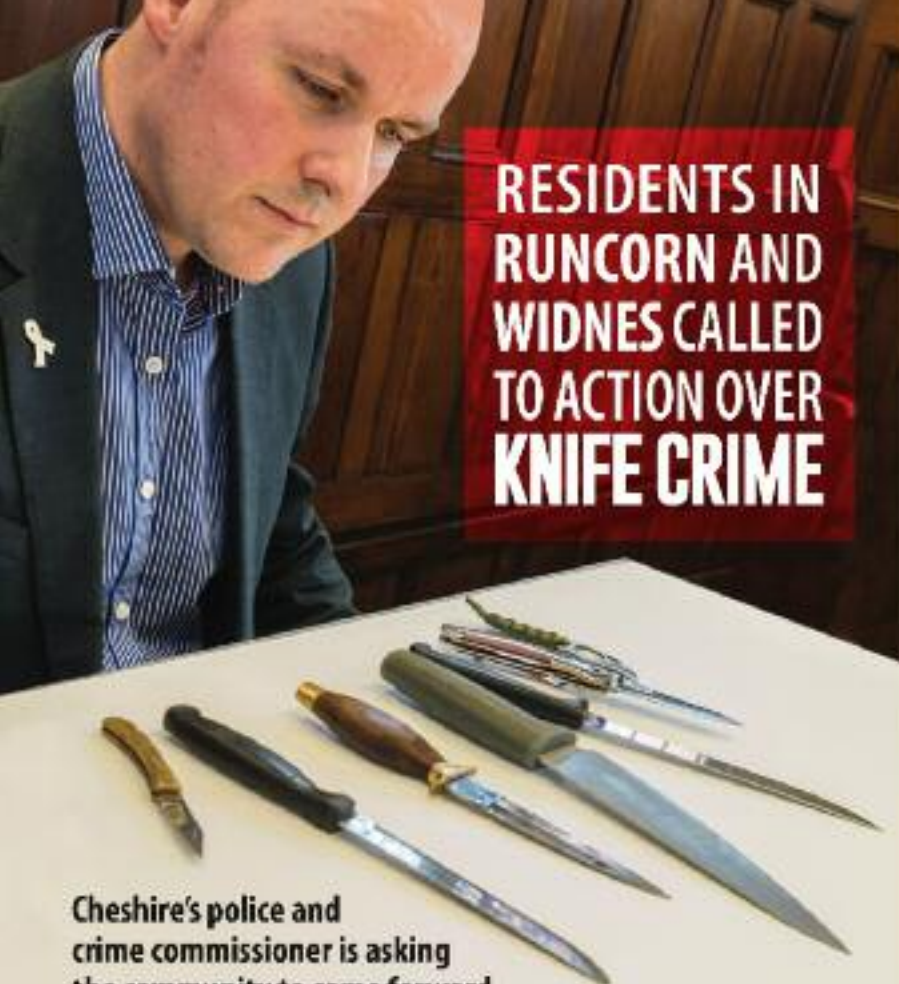
Talking Science at Daresbury Laboratory - On You, Inside You: The Amazing and Horrible World of Parasites



**FREE talk by Professor Cruikshank, University of Manchester Wednesday 30 January, 7pm, Halton Stadium. Book online via the libraries website or at your local library. Suitable for audience 6+**

Halton Libraries are proud to host, in partnership with Daresbury Laboratory, a Talking Science event at Halton Stadium. This is guaranteed to be a fascinating talk by a leading scientist on the subject of parasites.

Parasites are the most common form of cellular life on our planet and can be defined as organisms that live in or on us, taking from us without giving anything back. Everything from mammals, insects to plants can be infected by parasites- so parasites are incredibly successful. They can hide from our body's defences and may even change the behaviour of some of the animals they infect. They are also important as not only can they cause terrible diseases but they can be critical elements of food webs and contribute to biodiversity. Find out how parasites are so successful and how new scientific methods that help us visualise parasites, are helping us unlock even more of their secrets.



## RESIDENTS IN RUNCORN AND WIDNES CALLED TO ACTION OVER KNIFE CRIME

**Cheshire's police and crime commissioner is asking the community to come forward with information relating to people carrying knives to help tackle knife crime in Runcorn and Widnes.**

Knife related incidents remain a priority for local policing teams in both towns and the commissioner is concerned about the number of knife-related incidents with recent serious offences of robbery, assault and public disorder involving knives.

The commissioner is commending the work of local officers who have been working with partners and communities to tackle the issue.

Runcorn police have joined forces with community group Live Your Life, Drop The Knife, Halton Borough Council and housing trusts to arrange community knife sweeps. The sweeps involve searches of public areas in the town to try and find knives which carriers may have stashed so they are not caught carrying a knife by police.

In Widnes, officers have been working with Halton Borough Council's Trading Standards team to encourage traders who sell knives to take part in the 'Challenge 25' campaign so people who are under 25 have to show ID before being sold a knife.

Officers have also helped to deliver a number of programmes in schools to warn children of the dangers of carrying knives.

David said: "Knife crime can have a devastating impact on victims and their families. Carrying a knife is a crime and we've seen in cases across Halton that minor issues can escalate into something much more serious and potentially life changing when people have knives in their possession which are ultimately used as weapons.

"I am pleased that police in Runcorn and Widnes are doing all they can to reduce the number of dangerous weapons on our streets and I would encourage local residents who may have information about those who are illegally in possession of knives to come forward in confidence and report it."

**If you have any information regarding the carrying of knives, please call 101 or alternatively, report it anonymously to Crimestoppers on 0800 555 111.**



**David Keane**  
Police & Crime  
Commissioner  
for Cheshire

[www.cheshire-pcc.gov.uk](http://www.cheshire-pcc.gov.uk)



...and start a conversation on Domestic Abuse

## Commissioner spearheads campaign to challenge domestic abuse

Police and crime commissioner David Keane is spearheading a new initiative across Halton that changes attitudes and behaviour associated with domestic abuse.

The Open the Door campaign aims to bring domestic abuse out into the open by starting a conversation and removing the stigma of it being a hidden issue.

The Office of the Police and Crime Commissioner, Cheshire Constabulary, Public Health England, and Halton Borough Council, along with the three other local authorities in Cheshire, are represented on the strategic board.

It is the first time that police and all four local authorities have joined forces to provide information for access to officers, staff and residents about what help and support is available to them.

David said: "Cheshire's Open the Door campaign will be promoting self-help and early intervention for people who are experiencing domestic abuse.

"It will encourage residents to recognise the signs of domestic abuse and be confident in speaking openly about it in order to get help either for themselves or to help someone who is in an abusive relationship.

"It is very often family members or close friends who can see when a relationship is not healthy, or doesn't seem quite right so this campaign is encouraging friends and family to understand how to spot abuse and then to have the confidence to have the right conversation to support someone they are worried about.

"Encouragingly, research carried out reveals that, once support has been received, 80 per cent of people felt safer."

The campaign aims to equip people with the tools to feel safe and confident in having a conversation about domestic abuse – whether it's their situation or someone else they are worried about.

The partnership is seeking to challenge attitudes and behaviour and encourage early intervention by providing information for victims, friends and family on where they can access self-support services.

For further details, go to the dedicated website: [www.openthedoorcheshire.org.uk](http://www.openthedoorcheshire.org.uk)

# Funeral scheme to ease burden on the bereaved

Halton Borough Council is offering a funeral package that enables residents to have a funeral for a fixed cost, much lower than the national average.

**The Halton Residents' Funeral is a dignified and reasonable cost funeral package that is indistinguishable from any other. Any person who is a resident of Halton is able to purchase a Halton Residents' Funeral either at the point of need or in advance. A cremation funeral purchased at the time of need costs only £1,989.**

For those who already have a family plot burial prices start at £1,870. Recent figures show that a typical funeral costs on average £4,078. This cost can vary quite a bit, depending on location and the funeral arrangements.



## The Halton Residents' Funeral is like any other and includes:

- Collection of the deceased (within 25 miles)
- Dressing of the deceased. A viewing of deceased at Houghtons' Chapel of Rest (during office hours)
- Provision of a coffin with handles and an engraved nameplate.
- The funeral director's professional fees for making all necessary arrangements for the funeral service including provision of all appropriate staff and facilities to ensure that the funeral service proceeds with dignity
- Transportation of the deceased in a hearse from the funeral home to the funeral service and one following limousine
- A funeral service of 30 minutes in Widnes Crematorium chapel or a graveside ceremony at Runcorn Cemetery
- Cremation at Widnes Crematorium or burial at Runcorn or Widnes Cemetery (or Halton Cemetery in an existing family plot).

The Halton Residents' Funeral is organised by local funeral director, Houghtons. Company Director Rob Houghton, said: "We were delighted to have been appointed by Halton Borough Council to be its partner in this venture and to serve the people of Halton."

Council Leader, Cllr Rob Polhill, said: "We in Halton believe that access to a dignified funeral, without getting into large debt, is a basic human right.

"These days many people end up with expensive credit card or payday loan debts, or need to borrow from friends or apply to charities to pay for the funeral. We are really pleased to have found a partner in Houghtons who are as committed to this as we are."

If you are interested in a Halton Residents' Funeral contact **Houghtons Funeral Director**, 2 Frederick Street, Widnes, **0151 345 6726**.

# Victoria Park is the people's choice

The Widnes park finished in the top five of a national poll of favourite parks.

**Victoria Park beat hundreds of others in the Green Flag Award People's Choice 2018 and was the only park in the North West to make the cut.**

With more than 1,800 sites to choose from – all of which meet the high standards demanded by the Green Flag Award, the international quality marks for parks and green spaces – the public chose its ten favourites in an online vote.

Victoria Park, which according to TripAdvisor is the number one attraction in Widnes, features an impressive array of facilities - secure play areas including an interactive water feature open during the summer, ice cream kiosk, contemporary park pavilion run by Esposito's, bowling greens, model boating lake, floodlit tennis, basketball courts and skate park, climbing boulder, glasshouses with pets' corner and butterfly house.

Halton Borough Council's Executive Board Member for the Physical Environment, Cllr Ron Hignett, said: "We are very proud of Victoria Park. The award is a credit to the hard work frontline staff and volunteers put in to keep it in such great shape."

Runcorn Hill was in the top 25, making it a double success for Halton.



# Gateway first anniversary

## Mersey Gateway crossings reach over 23 million as iconic structure celebrates its first anniversary...

**The Mersey Gateway Bridge has welcomed over 23 million journeys in its first year, averaging 64,000 crossings per day and 72,000 each weekday.**

At midnight on 14 October 2017 the new bridge opened to traffic following a spectacular night of celebration with a light and fireworks display enjoyed by tens of thousands of people across Halton.

The three-and-a-half year construction project was completed on time and to budget and is allowing quicker, easier and more reliable travel across the River Mersey in Halton and the North West region.

Current figures show that average journey times across the route have reduced by up to 20 minutes.

May, June, July and August this year saw more than two million crossings each month, with July's total of 2,070,000 the highest number of total journeys in a single month since the bridge opened – a level of demand that is over and above the original traffic projections.

To date over 291,000 people have registered for discounted crossings with toll provider Merseyflow with approx. 63,000 payment transactions being completed per week.

Mike Bennett, Managing Director of the Mersey Gateway Crossings Board said, "It's been a fantastic first year for the Bridge and the transportation benefits it's bringing have even exceeded our high expectations. The Mersey Gateway is a catalyst for positive change and we are already seeing this right across Halton through job creation, community outreach and inward investment."

Over the course of construction nearly 1300 people were working on the project at its peak with over five million hours worked. Opportunities were created for 32 apprenticeships and a total of 73 weeks' worth of work experience was offered. Seventeen pre-employment programmes were also delivered in partnership with Halton Enterprise Partnership (HEP), supporting over 100 residents in learning new skills.

Over 650 people from the Halton area were successful in securing employment across the project. In its first year, 251 people remain working on the project and job creation continues.

Inward investment is also on the rise as a result of the numerous benefits of the Mersey Gateway.

David Parr, Chief Executive of Halton Borough Council, said: "Business in Halton is thriving. Transport and storage businesses have increased three-fold since 2010; professional, scientific and technical have increased more than 50%; education businesses have increased by 70% and health by nearly 40%. For the first time, registered businesses in Halton number more than 4,000. Since the opening of the Mersey Gateway we have seen the relocation of LPW to state of the art premises, the building of a 100,000 square foot expansion of a local business in Manor Park and site preparation at Gorse Point, Widnes, providing 40 acres of premium development land in anticipation of major investments."

Council Leader, Cllr Rob Polhill, said: "Halton is a great place and we stood behind its potential right from the beginning to become a thriving hub of economic growth in the North West. Getting the Mersey Gateway project off the ground was a journey of true challenge and triumph spanning multiple decades – but we never gave up."

"Throughout construction, the bridge brought prosperity to many through job creation and community outreach and one year on, the new crossing is surpassing our expectations."

"This is just the beginning. With transport connections which are second to none providing quicker, easier and more reliable journeys, Halton can continue to flourish and I'm excited to see what comes next."



### Merseyflow's call centre and walk-in centre Christmas opening hours

Tolls will apply on the Mersey Gateway Bridge as normal during the festive period and people can pay online at [www.merseyflow.co.uk](http://www.merseyflow.co.uk) 24 hours a day.

Merseyflow's call centre and walk-in centre are open as normal throughout the festive period, though shorter opening hours will be in place on the following days.

	CALL CENTRE	WALK-IN CENTRE
CHRISTMAS EVE	8AM-8PM	9AM-7PM
CHRISTMAS DAY	10AM-4PM	10AM-4PM
BOXING DAY	9AM-5PM	9AM-5PM
NEW YEAR'S EVE	8AM-8PM	9AM-7PM
NEW YEAR'S DAY	9AM-6PM	9AM-6PM



# the studio

## music, theatre, arts, you!

Everyone at The Studio in Widnes is thankful that LOOSE has been awarded three years of Lottery funding via Reaching Communities. It will benefit local people of all ages and, once again, young people will have their own regular weekly music, arts, and drama activities, access to knowledgeable inspirational staff, rehearsal/recording/video-making facilities and performance opportunities.

The Studio in Lacey Street, has been owned by local charity LOOSE since 2009 and is run 100% for local benefit as a community music, theatre and creative arts centre.

All Trustees/Directors are unpaid volunteers and are part of the local community.

The Studio has a Steering Group: "Anyone can be part of this; people of all ages are welcome to attend meetings, help make decisions, and put forward their ideas," says Louise Nulty, Project Manager. "We also support local people, groups and organisations to put on their own events."

High quality, free or low-cost creative activities are now running for all ages and abilities on Monday and Wednesday evenings, Saturday mornings, and Friday and Sunday afternoons. No need to book for the Monday, 6.30 - 8pm, The Studio Sings sessions- all ages welcome. Booking is essential for recording or rehearsal sessions.

A new addition is Creative Writing which could also evolve into song-writing, recording, or performance, and also a focus on literacy with one-to-one sessions bookable.

You can also improve your quality life. "The feedback we get is that The Studio is a truly special place, bringing people together to socialise, explore their creativity, building skills and confidence," says Jaki Florek, one of the Volunteer Directors of LOOSE.

"It is now even more warm and welcoming due to a new boiler system fitted by local company OMG Plumbing & Heating, and roof repairs and other building improvements by Cheshire Construction (NW) Ltd. The Studio PA has also been upgraded by Ad Lib Audio.

"This has all been made possible by a grant from \*WREN's FCC Community Action Fund, and we are grateful for third party contributions of £2,687 from Halton Housing Trust and £752 from Halton Borough Council."

**OPEN DAY:** Sunday January 20th 12 noon-3pm. Meet the staff and volunteers plus activity taster sessions of what's available in 2019.

Make your New Year's Resolution to get out of the house, make new friends and learn new skills.

\* WREN is a not-for-profit business that awards grants for community, bio-diversity and heritage projects from funds donated by FCC Environment through the Landfill Communities Fund.

1. Mondegreen (Laura Griffiths, Claire Smith, Leanne Griffiths) performing at the recent Women Shall Overcome event. Photo by Warren Millar.
2. Actress Eithne Browne, MC of the Women Shall Overcome event.
3. The Racket - Widnes band playing The Studio in December.
4. Winner of the Halton Open Arts Competition, Rachel Prime (pictured right).



### EVENTS IN DECEMBER

Come on your own or with friends and family.

**SATURDAY 1st:**

The Racket plus guests - Doors 7pm.

**FRIDAY 7th:**

Stand Up at the Studio - monthly Comedy Night

£3 - Doors 7.30pm.

**SATURDAY 8th:**

Woollywood Theatre, 'Advent.Ure', - Doors 7pm.

**SUNDAY 9th:**

Record Fair & Christmas Bazaar - Stalls, food,

live music, Father Christmas! 12 noon - 3pm.

Free Entry. Book a stall.

**WEDNESDAY 12th:**

Banner Theatre, 'Spirit of 1868', £5 - Doors 7.30pm

**WEDNESDAY 19th:**

Studio Screening Film Club, quiz and raffle. FREE.

6.30pm.

### INFORMATION & BOOKING

Email: [info@thestudiowidnes.org.uk](mailto:info@thestudiowidnes.org.uk)

Phone: 07930 388844

All information is on the website

[www.thestudiowidnes.org.uk](http://www.thestudiowidnes.org.uk) and

[www.Facebook.com/studiowidnes](https://www.facebook.com/studiowidnes)

# Hidden Halton Commercial Gems

What doesn't happen in Halton? In a two-part series looking at the borough's businesses, here is an overview of some of the hidden jewels in the sub-regional crown.

**Halton has a strong industrial legacy dating back into the 18th century and holds a place in history as the catalyst of the UK and world chemicals industry. Whereas Halton still has the strongest presence at the centre of the chemicals world there is so much more to the place than chemicals alone.**

Whether it is the food you eat, the beverages you drink, or the medicine you need, Halton may have had a role in developing and manufacturing it. Indeed, the car you drive, the plane you board to go on your holidays or high tech gadgetry you play or work with, Halton will have some influence on your daily life. It is a borough of both pride and high productivity.

Throughout the 1990s and early part of this century Halton embarked on a transformational journey; fast becoming the leading destination for research, scientific industries and advanced manufacturing for the Liverpool City Region. Halton is a net contributor to the overall wealth of the region.

## So, what do we have?



Providing Halton with an international profile is the world famous Sci-Tech Daresbury which is home not only to one of the UK's most powerful super-computer but also the only research and development base for IBM outside of the USA.



The analysis from the most significant astronomical study in decades (the Square Kilometre Array, literally an attempt to research and see where no one has gone before) will also take place in Halton.



We are also home to LPW, a world leader in metal additive manufacturing, which is 3D printing for the commercial world. They help companies around the world develop prototypes for new products and have grown more than 7,000% over the last decade, here in Halton and are passionate about employing apprentices.





If you drive a European (including British) car then it is more than likely that it will have parts with coatings (to prevent squeaking and sticking) originating and developed by Whitford, based in Manor Park in Runcorn.

We also have Sigmalex, established in 1986 and has specialised in helping customers create cutting edge carbon fibre textiles since then and a world leader in the industry.



Halton is so much more than high technology though. It is rumoured that every pint of Guinness that is drunk (or spilled) in the UK and Europe (except the Republic of Ireland) passes through Halton on its journey to your lips. It is distributed by Diageo who employ more than 150 people in the local area and have been a strong presence for decades.

If you've ever witnessed the Red Arrows taking off and landing at an air display you can be sure that they do so safely using landing gear originating in Halton.

Heroux Devtek is a Canadian owned company specialising in the design, development, manufacture and repair and overhaul of landing gear, it is the third largest landing gear company worldwide and employs more than 230 people here. We are also home to Alstom in the North West, where trains are manufactured – but we are not responsible for when they are late!



When in need of medical care Halton is also there for you. Both Mexichem and Fresenius-Kabi support the NHS in its continuing task to keep us all and our families well and happy. Over the next few years they will jointly be employing more than 1,000 people in Halton with the majority of those positions being held by local people.



All of the businesses mentioned here employ local people and are passionate about apprenticeships and together with Riverside College we have jointly developed outstanding quality apprenticeship programmes. Halton Council's Business Improvement and Growth Team work with all local partners to provide support and secure the presence of businesses in Halton.



So, the next time you get in your car, take that all important medicine or enjoy a tippale of Guinness on St Patrick's night just remember - what you are doing may be influenced by this significant and effective place you call your home!

“ Cllr Eddie Jones, Portfolio Holder for Economic Development: **“It is incredible when you consider the variety and type of businesses in Halton - over the last 10 years we have been at the forefront of helping companies to start up or expand in this, our area. The focus of Halton Borough Council is to ensure that the advantages of business success are felt locally by enabling our residents to benefit from the jobs created and that the borough as a whole, further develops, thrives and prospers.”** ”



# History of Widnes RUFC on film

Members of Widnes RUFC are becoming movie-makers to produce a film of the club's long and varied history.

At the start of this year Widnes RUFC were awarded a grant from the Heritage Lottery Fund, with help from Halton Council's community development team, to tell the story of the club's growth and development as a sports and leisure facility and how it reflects and contrasts with that of the local area in a post-industrial age.

As well as rugby, the club was a major social centre in the 60s and 70s – booking records show that acts were as varied as Kenny Ball, Bob Carolgees and Iron Maiden.

The town of Widnes is unrecognisable from 60 years ago but members of the club have played active roles in its change at a time when the North West became a world-wide focal point. Their aim is to film and record people's memories and experiences and produce a short documentary, and part of their project includes training in film-making techniques for their volunteers.

They had the public launch of the project at the first match of their 60th season.

Filming started at (Farnworth) Widnes railway station where long-time members Ivor Lewis and John Ashton recalled their part in the town's musical history. Ivor drove Paul Simon to the station after his now-famous concert at the Howff Folk Club. John, whose mother was born at the Station House, was guitarist in the Cheetahs and played support to the Beatles, Rolling Stones and Hollies. Realising the importance of the music boom, they spent the 1967 Summer of Love rebuilding 'The Wids' clubhouse and transforming it into the town's main evening music venue. To extend this theme, local musicians and club members will be contributing a soundtrack to the movie.

Jane and Stephen Morris, retiring Presidential couple.



They will be installing a new screen and sound system to play the documentary once it is finished and a small team of archivists and record keepers are working hard to update their collection of programmes, photos and statistics including scanning and dating 94 years' worth of team photos and listing every first team player in order of appearance.

They will also be running open forums - Team Talk Wednesdays - and are keen to involve as many local people as possible. For more information please contact John Loughnane: Mobile: 07989 383876, e-mail: johnloughnane@hotmail.co.uk and website: www.pitchero.com/clubs/widnes

Education & Skills Funding Agency

Change Your Life  
learn something new

FREE COURSES

- Skills for Life Employability
- IT - Levels 1&2
- Confidence Building
- Wellbeing
- Family Learning in Schools/ Children's Centre Courses
- Sewing - Level 1\*

OTHER COURSES AVAILABLE\*

- Teaching Assistants\*
- Childcare\*
- Arts & Crafts\*
- Introduction to Counselling\*
- Business Planning and Marketing\*

\* Fee remission is available ask for details

Halton Children's Centres

## Enrolling Now for Spring Term

Acorn Learning Centre, Castlefields

Tuesday 11<sup>th</sup> December &  
Wednesday 2<sup>nd</sup> January  
10.30am - 5.30pm

Kingsway Learning Centre, Widnes

Thursday 13<sup>th</sup> December &  
Thursday 3<sup>rd</sup> January  
10.30am - 5.30pm

0151 511 7788

adult.learning@halton.gov.uk

Check us out on Facebook

www.halton.gov.uk

Call in to see us at:  
Acorn Learning Centre,  
Rimcorn W67 2JE

Kingsway Learning  
Centre, Widnes  
W48 7QR





# Council launches innovative joint foster carer recruitment service

Halton Borough Council, together with Warrington, Cheshire East and Cheshire West and Chester Councils, has launched a new, collaborative project to recruit more foster carers.

**The service now known as Foster4 aims to recruit even more foster carers and provide even greater support, training opportunities, rewards and benefits.**

Fostering is a truly rewarding, accessible and flexible, home-based role that can appeal to people from all walks of life. From stay at home parents or part-time workers, to retirees and those looking at alternative options to full-time work, if you're interested in fostering, we want to hear from you.

Foster carers operate on a self-employed basis and can express a preference for the type of fostering they would like to undertake. You don't necessarily need to have a large house, just a warm and welcoming home with the space to give a child somewhere to call their own, and the time

in your life to care for them. We provide all the training you need, as well as exceptional support, allowances and benefits.

The next Become a Foster Carer information sessions in Halton are:

**Tuesday 11 December**  
Costa Coffee, Runcorn Shopping City  
WA7 2GX | 11AM

**Thursday 20 December**  
Castlefields Community Centre, WA7 2ST | 10AM



# F<sup>4</sup>OSTER

[www.foster4.co.uk](http://www.foster4.co.uk)

0800 195 3175

Like us on Facebook: [foster4cheshire](https://www.facebook.com/foster4cheshire)



# Shining example

Halton Borough Council is streets ahead when it comes to energy-saving lighting, as the latest illuminating figures show.

**In the past three years, the Council has upgraded or replaced more than 7,000 of the borough's street lanterns to LED, resulting in an annual energy saving now of over two million kWh (equivalent to £250,000 at current prices) and saving around 1,000 tonnes of carbon emissions per year.**

Halton Council first started to install LED street lights in 2009 and since then has increased the numbers of them year on year.

LED street lighting provides for a better light quality for road users, as LED lanterns produce a whiter light, which improves night time vision and colour definition, and creates a general feeling of greater safety and security.

The new LED lanterns have improved control of the light distribution, using different lens design technology, which means that the light is distributed where intended on the roads and footways, with less wasted spill light to surrounding areas.

In 2015, following a bid to the Department of Energy and Climate Change (DECC), the Council received a grant contribution towards the installation of around 2,000 LED street lights.

From 2016, it was agreed to roll out the installation of LEDs in the rest of the borough at the rate of

around 2,500 lanterns per year. In the first two years of this programme, more than 5,000 lanterns have been upgraded or replaced with LED.

These energy-efficient units, lower power consumption typically by 50% or more. They also require less maintenance than previous technologies. In addition, the LED street lights that have been installed since the programme started, vary the light levels during the night when road usage is minimal, producing further energy savings.

Typical overall energy savings of the schemes that have been installed in Halton so far have resulted in an energy reduction of around 70%.

To date more than 13,000 of Halton's 20,000 street lights have been converted or changed to LED.

Costs of the lanterns are continually monitored, and current prices are around 75% less than 2009.

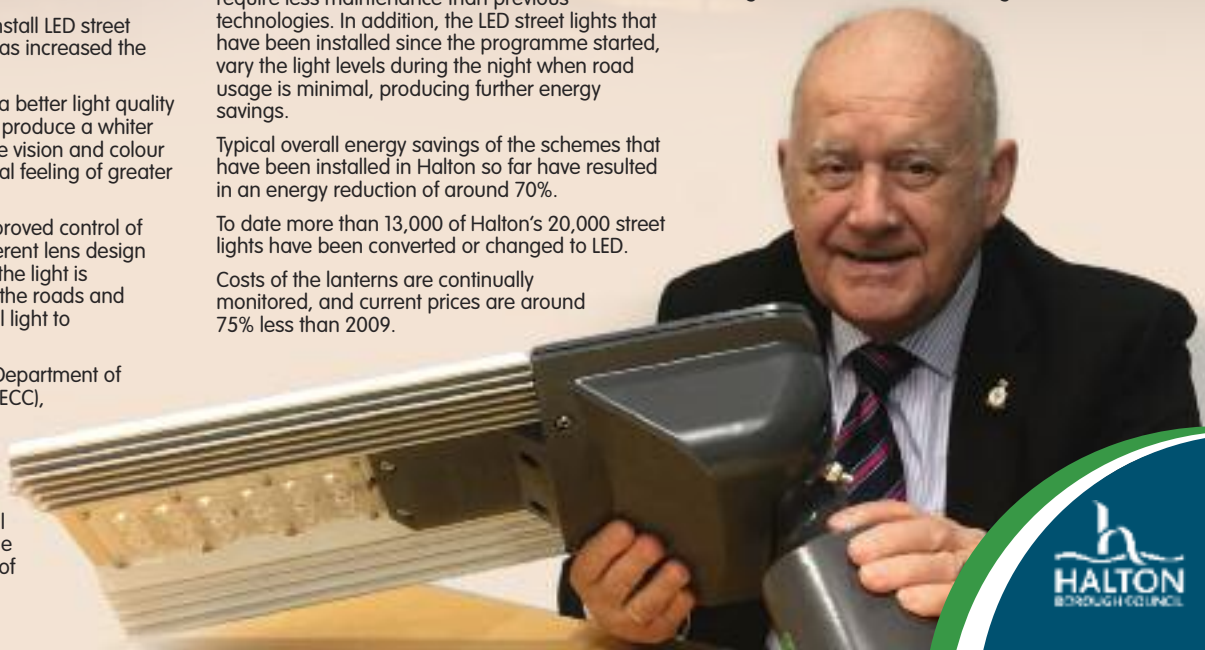
Ongoing improvements to the LEDs have also increased efficiency by up to 30% since the earliest installed lanterns of 2009.

The programme of the work for residential roads is due to be completed by the end of March 2021.

Cllr Stan Hill, the Council's Executive Board member for Transportation, says:

"It is essential that we spend money on modernising our street lights to guard against rising energy prices and maintenance costs, and the savings that have been made, both in cost and energy, by installing these LED lights are tremendous.

"We have received some very positive comments from residents about the new lights as they are being installed around the borough."



## Friends work together to care for beauty spot

The newly-formed Friends of Spike Island and Victoria Promenade got together to look after the area and would like volunteers to join them.

The group launched with a Clean-up Campaign event when mounds of rubbish and household items, including a suite, were retrieved and taken away. Face painting, making bird feeders and key rings were part of the children's activities available. The group would like to thank all the volunteers and partners who made the day such a success.

The Friends group is working with others who have an interest in Spike Island, such as West Bank Boat Club, to bring about improvement to the island and to the Sankey Canal. One of the projects that has recently begun should see a swing bridge installed on the site of the historic original that dated back to 1833. It is hoped to have this in place by 2020. There are also plans for a boat festival to take place at Spike Island in 2020.

Aims of the group are to: Increase public use on the Island, making it a safer friendlier environment; bring the history of the Island back to life with new technology; provide educational information; provide healthy outdoor activities; and combat isolation and bring inclusiveness through these activities.

They are looking for volunteers to help with projects along the canal and island, so if you are interested please contact: Pamela, 07887 861169, or Angela, 07889 727220.

Find them on Facebook, Friends of Spike Island & Victoria Promenade.



## Service helps promote independence

Halton Borough Council's Telehealthcare Service Annual Report is now completed if you'd like to find out more about this service.

Formerly called Halton Community Alarm Service, the service helps people live independently in their own homes by installing a range of sensors in the home which enable people or automated equipment to summon help in an emergency.

It provides a full 24-hour response service and, in the event of an alarm activation, Telehealthcare staff will visit if necessary to check everything is ok.

Following the service restructure last year, the Council continues to provide the service in line with the national drive towards Technology Enabled Care Services (TECS).

For the full report, see the Council's website, [www.halton.gov.uk/cas](http://www.halton.gov.uk/cas)

To request a printed copy, or for more details on the service please contact Chris Durr, email [chris.durr@halton.gov.uk](mailto:chris.durr@halton.gov.uk), tel 0151 511 8024.



# Come and join the club

Hillview Women's Club in Beechwood, Runcorn, has been going for 37 years offering talks, workshops and, most importantly, friendship.

Part of the National Association of Women's Clubs which has over 130 clubs with almost 5,000 members, Hillview have been self-sufficient all this time with their members happily giving their time and enthusiasm to support the group.

The Club has recently received an Area Forum grant from their local councillors to help boost their membership and really showcase the great work they do.

They have already held a very successful open evening, doubling their usual numbers, but their work doesn't stop there. Over the next few months the group have a series of talks and workshops including information about good eye and ear health, ukulele sing along session and an artist workshop.

The group meets every 2nd and 4th Tuesday of the month, 8pm-10pm, in St Mark's Church in Beechwood. There is a small entry fee to attend the meetings with free tea and coffee provided as well as a free raffle.

For more information please contact: Hazel - 01928 711519, Gill - 01928 716658, or Beryl - 01928 713118.

Pictured above (left to right): Gill Linger (Treasurer), Hazel Tinsley (Secretary), Beryl Oakley (Chair).



*Exciting opportunity to be active in your community!*

*Age UK Mid Mersey works to celebrate age and highlight the needs of older people in Halton.*

**We need your help!**

*Join one of our expert consultation panels where you can help us to engage with older people as well as decision makers.*

*This is an ideal opportunity for those who want to make a difference to older peoples lives and would like to meet new people too!*

*We are looking for people from all backgrounds who are aged 50+.*

**Contact: Clare Lightfoot (Older Peoples Forum Officer)**

**T: 01928 575400 E: [clarelightfoot@aukmm.org.uk](mailto:clarelightfoot@aukmm.org.uk)**

Age UK is a charity registered in England



## Motorists urged to prepare their vehicles for winter

With the darker nights' drawing in Cheshire Fire and Rescue Service is urging all motorists to ensure that their vehicles are ready for winter.

To help motorists prepare for the weather ahead, firefighters will be carrying out free safety checks on cars as part of their continuing campaign for safer roads in Cheshire.

As part of the checks, firefighters will be checking tyres for any bulges or defects, as well as the tyre depth.

They will also be showing drivers how to check their oil and water levels, and explaining the importance of maintaining them.

The first winter weather safety checks are taking place at supermarkets in Halton. To find out when your local checks are taking place visit [www.cheshirefire.gov.uk](http://www.cheshirefire.gov.uk), check out [www.facebook.com/CheshireFRS](https://www.facebook.com/CheshireFRS) or follow @Cheshire Fire on Twitter.



## Rise in deliberate wheelie bin fires in Widnes

Firefighters are urging Widnes residents and businesses to only leave wheelie bins outside on collection day following an increase in arson incidents.

Nick Evans, Head of Prevention at Cheshire Fire and Rescue Service, said: "The recent rise in arson incidents involving wheelie bins in Widnes in the early hours of the morning is concerning and we urge those responsible to stop starting fires deliberately.

"This is an extremely dangerous form of anti-social behaviour. Such fires can spread and put properties and lives at risk.

"They also tie up resources, meaning that it will take longer for fire crews to respond to actual emergencies, such as house fires, because they are putting out these fires which are totally avoidable."

Cheshire Fire and Rescue Service's advice for preventing a wheelie bin fire is:

- Store all wheelie bins away, especially at night, to avoid them becoming a target for arsonists
- Only place your wheelie bin out on collection day and return it to your property as soon as possible after collection
- Whenever possible wheelie bins should be stored securely behind locked gates
- Do not overfill your wheelie bins or leave loose rubbish around them.

Residents and businesses are also urged to never place hot items in bins, such as smoking materials, hot embers from coal/wood and hot ash, and to never store wheelie bins by windows or doors as any fire in the bin can easily spread to your property.



## Candle Safety

Candles in the home can lend a warm glow to an evening but always remember that candles have to be treated carefully as they can also be a fire hazard.

Here are some safety tips to help use candles safely:

- Keep candles out of reach of children and pets.
- Always use a heat resistant holder.
- Keep candles away from materials that may catch fire - such as curtains, furniture, clothes and hair.
- Always put scented candles in a heat resistant holder.
- Make sure you put out any candles when you leave the room.
- Never leave a lit candle unattended.
- Never put tea lights onto plastic surfaces like a TV or bath.

POLKA DOT  
PANTOMIMES

Polka Dot Pantomimes presents  
The Brindley's magical pantomime

thebrindley  
theatre

From The Sugababes

**AMELLE  
BERRABAH**

as Fairy Sugababe

**ANDREW  
CURPHEY**

as French Franc

**REBECCA  
LAKE**

as Belle



# BEAUTY AND THE BEAST

**ROBERT  
SQUIRE**

as Dame Dolly  
Daughlin

A Truly Magical Family Pantomime

10 DECEMBER 2018 - 13 JANUARY 2019

THE BRINDLEY THEATRE, HIGH STREET, RUNCORN, WA7 1BG

Box Office: 0151 907 8360 | [www.thebrindley.org.uk](http://www.thebrindley.org.uk)

## DECEMBER 2018

### SATURDAY 1 CHRISTMAS TABLE DECORATIONS WORKSHOP

NORTON PRIORY MUSEUM & GARDENS  
10AM - 3PM | £25 PER PERSON  
Places must be booked in advance.  
While away a relaxing few hours creating stunning festive centrepieces for your table. You will learn how to design and create two festive decorations using the materials, resources and skills available at Norton Priory. Call 01928 569 895 or book online [www.nortonpriory.org](http://www.nortonpriory.org)

### SATURDAY 1 BBC RADIO MERSEYSIDE TOY APPEAL BUS

WIDNES MARKET FROM 9.30AM  
The Radio Merseyside bus will be collecting toys outside Widnes Market. All toys donated will go to local children.

### SUNDAY 2 FRUIT TREE PRUNING WORKSHOP

NORTON PRIORY MUSEUM & GARDENS  
10AM - 1PM | £25 PER PERSON  
Places must be booked in advance.  
Learn the theory behind pruning your orchard trees then have a go yourself under expert supervision in the grounds of Norton Priory. The course will provide participants with practical skills through hands-on experience. Call 01928 569 895 or book online [www.nortonpriory.org](http://www.nortonpriory.org)

### SATURDAY 8 LANTERN AND REINDEER PARADE AROUND THE TOWN CENTRE, STARTING FROM THE BRINDLEY RUNCORN TOWN CENTRE | TIME TBC

### SATURDAY 8 FAMILY CAROL SINGING

NORTON PRIORY MUSEUM & GARDENS  
4PM - 6PM | £5 PER PERSON  
TICKETS MUST BE BOOKED IN ADVANCE.  
Enjoy some festive carol singing in the atmospheric medieval undercroft at Norton Priory Museum & Gardens with Runcorn Community Choir. Includes tea/coffee/juice and mince pies. Call 01928 569 895 or book online [www.nortonpriory.org](http://www.nortonpriory.org)

### SATURDAY 8 CHRISTMAS AT CATALYST MUSEUM

1PM-4PM  
Featuring crafts and stalls, face painting, mulled wine and mince pies, story-telling and festive carols. Come along to Catalyst and meet Santa and his elves!

### SATURDAY 8 WIDNES WONDERS WI CHRISTMAS FAIR

MOORFIELD SPORTS AND SOCIAL CLUB, MOORFIELD ROAD, WIDNES | 11 - 3PM  
Come along and support Widnes Wonders WI (Women's Institute) to raise funds for local community projects: Tombola, Hook a Duck, Hoopla, raffles and much more. Handmade crafts stall, homemade cakes, jams & chutney made by the WI ladies. Bring the kids to see Santa in his grotto. Tea, coffee & cakes.

### SUNDAY 9 ELF SCHOOL

NORTON PRIORY MUSEUM & GARDENS  
WORKSHOPS AT 10AM (11.45AM) | 1.45PM OR 3.30PM  
£15 PER CHILD (INCLUDES ONE FREE ADULT)  
Tickets must be booked in advance  
Fun filled festive delights with Elfie Doodles! Train to become one of Santa's Elves with magic, music and merriment. Includes balloon reindeer wand workshop, candy cane, engraved medal and certificate for every child presented by Santa. Call 01928 569 895 or book online [www.nortonpriory.org](http://www.nortonpriory.org)



### DECEMBER 10 - 13 JANUARY BEAUTY AND THE BEAST

BRINDLEY | TICKETS FROM £18  
Pop star Amelle Barrabah from the Sugababes is the star of this season's festive pantomime, Beauty and The Beast, presented by Polka Dot Pantomimes. Amelle plays Fairy Sugababe alongside Rebecca Lake, Charlie Griffiths, Andrew Curphey, Robert Squire and Christopher Pym. For details of times and ticket prices go to [www.thebrindley.org.uk](http://www.thebrindley.org.uk) or contact the box office on 0151 907 8360.

### TUESDAY 11 - WEDNESDAY 12 CHRISTMAS GOTHIC

Presented by Dyad Productions  
BRINDLEY | 7.30PM | STUDIO | £17, £15  
Three seasonal tales of terror for dark Christmas nights.



TUESDAY 11  
HALTON FOSTERING INFORMATION SESSION  
COSTA COFFEE, RUNCORN SHOPPING CITY | 11AM  
Become a foster carer with your local authority.

### FRIDAY 14 - MONDAY 17 SANTA'S CHRISTMAS PARTY

BRINDLEY | 11AM, 1.30PM & 4PM FRIDAY, 11AM, 1.30PM & 3.30PM SATURDAY, 1PM & 3PM SUNDAY 11AM & 1.30PM  
MONDAY | STUDIO | £13  
An interactive family show, suitable for 2-7 year olds. Each receives a special present from Father Christmas.

### FRIDAY 14 TAKE PHAT & CHRISTMAS PARTY

Presented by GMS Promotions  
BRINDLEY | 7.30PM | THEATRE | £18.50  
Proceeds will be donated to the Halton Haven Scanner Appeal. Early booking is advised.

SATURDAY 15  
REINDEER AND FESTIVE ACTIVITIES WITH WIDNES MARKET  
WIDNES TOWN CENTRE | TIME TBC

### SATURDAY 15 STADIUM CHRISTMAS PARTY NIGHT

HALTON STADIUM | 7PM TILL LATE | £25  
Two course famous Stadium carvery. Sparkling reception drink DJ & host Roy Basnett and live entertainment from the brilliant Paul Hand. TICKETS AVAILABLE FROM THE HALTON STADIUM, CALL 0151 510 6000  
OR E-MAIL: [STADIUM@HALTON.GOV.UK](mailto:STADIUM@HALTON.GOV.UK)

### SUNDAY 16 GET READY

BRINDLEY | 7.30PM | THEATRE | £27  
40 No.1s from the Temptations, Four Tops, Supremes and more.

### MONDAY 17

THE BIG BAND AT CHRISTMAS  
BRINDLEY | 7.30PM | THEATRE | £20, £18  
Enjoy all your favourite Christmas songs with the dynamic Big Band treatment.

### THURSDAY 20

HALTON FOSTERING INFORMATION SESSION  
CASTLEFIELDS COMMUNITY CENTRE | 10AM  
Become a foster carer with your local authority.

### WEDNESDAY 19, SUNDAY 23 AND THURSDAY 27, SUNDAY 30 FROZEN SCIENCE WORKSHOPS

CATALYST MUSEUM | 11.30AM AND 2.00PM  
Visit Catalyst and find out about the science of ice and snow. Learn about snowflakes, be amazed by hot ice and make your own snowstorm in a jar in this fun, family workshop.

### WEDNESDAY 19, SUNDAY 23 AND THURSDAY 27, SUNDAY 30 LIGHT FANTASTIC SHOWS

CATALYST MUSEUM | 12.30PM  
Come and find out how light travels in this interactive show for all the family. With UV lights, fibre optics, plasma ball, glow in the dark objects and more! Tickets for the show or the workshops cost £1.25 per person in addition to the normal admission to Catalyst but they are limited and are sold in reception each day on a first come, first served basis.

### FRIDAY 21 - SUNDAY 23

FATHER CHRISTMAS COMES UP TRUMPS  
Presented by TaleGate Theatre Productions  
BRINDLEY | 11AM & 1.30PM | STUDIO | £14  
Father Christmas is back, and this time he's had three helpings of sprouts!

### MONDAY 24

IT'S A WONDERFUL LIFE - SCREENING  
BRINDLEY | 1PM | STUDIO | £12  
Enjoy this classic Christmas film in our festively decorated Studio. Includes seasonal refreshments.

## JANUARY 2019

WEDNESDAY 2 10.30-12.00PM | HALTON LEA LIBRARY  
THURSDAY 3 10.30-12.00PM | WIDNES LIBRARY

### PLASTIC HOLOGRAMS

FREE, DROP-IN. Suitable for ages 7 - 12 years.  
Wondering what to do with all those left over plastic bottles? Why not join us and find out! We'll be showing you how to create an amazing hologram to impress your friends and family with. Plastic bottles provided.

### SATURDAY 5 - SUNDAY 6

ANDRÉ RIEU 2019 NEW YEAR'S CONCERT FROM SYDNEY - SCREENING  
BRINDLEY | SATURDAY 7PM & SUNDAY 3PM | STUDIO | £20, £18

WEDNESDAY 9 10-4PM | HALTON LEA LIBRARY  
THURSDAY 10 10-12PM | WIDNES LIBRARY

### EBOOK & EAUDIO DROP-IN. FREE.

Halton libraries have thousands of eBook and eAudiobooks available through your smartphone or tablet completely free of charge. If you've always wanted to know how to use our apps but don't know where to start, come along to our eBook and eAudio drop-ins. Our friendly staff will be on hand to help beginners learn how to download eBooks, eAudiobooks and magazines. Bring along your own device if you have one or use one of our PCs to discover a whole world of reading in the palm of your hand!



thebrindley  
what's on



**FRIDAY 18**  
**BARRY STEELE & FRIENDS – THE ROY ORBISON STORY**  
 BRINDLEY | 7.30PM | THEATRE | £24

**SATURDAY 19**  
**ANDREW CURPHEY THEATRE COMPANY PRESENTS '10'**  
 BRINDLEY | 3PM & 7.30PM | THEATRE | £13  
[www.facebook.com/actheatreco](http://www.facebook.com/actheatreco)

**SUNDAY 20**  
**ADULT PANTO: HANSEL & GRETEL GO DOWN IN THE WOODS**  
 BRINDLEY | 7.30PM | THEATRE | £21, £19.50  
 Get ready for an evening of slick, fast-moving, farcical fun and bawdy innuendo.

**TUESDAY 22**  
**LOCAL HISTORY TALK – TWO FISTED GENTLEMEN: A HISTORY OF BOXING IN WIDNES AND RUNCORN – JOHN SINNOTT**  
 WIDNES LIBRARY | 6PM  
 Free, booking necessary via library website or at your local library. Join us for an evening with local historian John Sinnott to talk about the history of boxing in Widnes and Runcorn, to celebrate the re-print of his popular book. Copies of the book will be available to purchase on the evening.

**TUESDAY 22**  
**DIRTY DUSTING**  
 BRINDLEY | 7.30PM | THEATRE | £25.50  
 Starring Crissy Rock (Benidorm, I'm a Celebrity).

**THURSDAY 24**  
**THE SEARCHERS – FAREWELL SHOW**  
 BRINDLEY | 7.30PM | THEATRE | £25.50

**FRIDAY 25**  
**ABSOLUTE BOWIE**  
 BRINDLEY | 7.30PM | THEATRE | £22

**SATURDAY 26**  
**QUADROPHENIA – THE ALBUM LIVE**  
 BRINDLEY | 7.30PM | THEATRE | £23

**SUNDAY 27**  
**LET'S DANCE 2019**  
 DANCE SHOW BY CERI ELLEN SCHOOL OF DANCE.  
 BRINDLEY | 2PM & 5.30PM | THEATRE | £13.50

**SUNDAY 27**  
**FRUIT TREE PRUNING WORKSHOP**  
 NORTON PRIORY MUSEUM & GARDENS | 10AM – 1PM  
 £25 PER PERSON  
 Places must be booked in advance.  
 Learn the theory behind pruning your orchard trees then have a go yourself under expert supervision in the grounds of Norton Priory. The course will provide participants with practical skills through hands-on experience. Call 01928 569 895 or book online [www.nortonpriory.org](http://www.nortonpriory.org)

**MONDAY 28 -TUESDAY 29**  
**LAST TRAIN TO AUSCHWITZ**  
 BRINDLEY | 8.00PM | THEATRE | £20, £16  
 A group of women fight for survival in the notorious concentration camp.

**WEDNESDAY 30**  
**TALKING SCIENCE AT DARESBURY LABORATORY - ON YOU, INSIDE YOU: THE AMAZING AND HORRIBLE WORLD OF PARASITES**  
 A TALK BY PROFESSOR CRUIKSHANK,  
 UNIVERSITY OF MANCHESTER  
 HALTON STADIUM | 7PM.

Free, book online via the library website or at your local library. Suitable for audience 6+  
 Halton Libraries are proud to host, in Partnership with Daresbury Laboratory, a Talking Science event at Halton Stadium. This is guaranteed to be a fascinating talk by a leading scientist on the subject of parasites.

**WEDNESDAY 30 - THURSDAY 31**  
**DESPERATE SCOUSEWIVES 3 – SITTING AT THE TOP OF OUR STREET**  
 BRINDLEY | 7.30PM | THEATRE | £19.50, £18  
 Four ordinary Scouse women, living in the back streets of Liverpool.

## FEBRUARY 2019

**FRIDAY 1**  
**THE SUPERSONIC 70S SHOW**  
 BRINDLEY | 7.30PM | THEATRE | £25  
 Incredible live show jam-packed with classic 70s hits.

**FRIDAY 1**  
**TWENTYTWELVE**  
 BRINDLEY | 8PM | STUDIO | £10  
 Runcorn comedian Colin Havey brings his debut Edinburgh show to the Brindley Theatre.

**SATURDAY 2**  
**DANCE YOUR SOCKS OFF!**  
 BRINDLEY | 1PM & 5PM | THEATRE | £12  
 Dance show by Alexandra Jane School of Dance.

**TUESDAY 5**  
**SAFER INTERNET DAY**  
 HALTON LEA LIBRARY  
 10.30-11.30AM | FREE, DROP-IN  
 To support this year's campaign all Halton Libraries will be showing a special online safety video for children and young people and showcasing a range of Internet safety books and information.

**TUESDAY 5 – SATURDAY 9**  
**TRIVIAL PURSUITS**  
 Presented by Centenary Theatre Company  
 BRINDLEY | 7.30PM | THEATRE | £15, £14  
 Hilarious play centred on a fictional Amateur Dramatic Society.

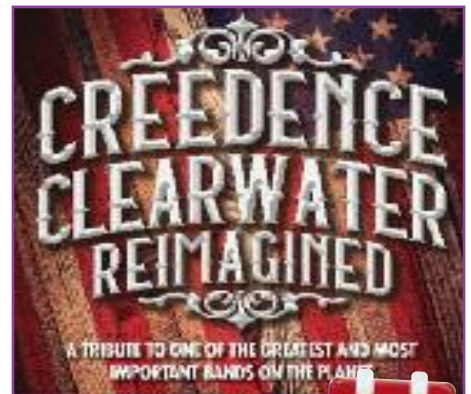
**THURSDAY 7**  
**TIME TO TALK DAY**  
 WIDNES AND HALTON LEA LIBRARIES  
 10AM-12PM | FREE, DROP-IN  
 Time to Talk Day brings the nation together to get talking and break the silence around mental health problems. Come and have a cuppa, look at our Reading Well books and talk to mental health advisors.

**THURSDAY 7**  
**HARRY POTTER NIGHT CHATTERBOOKS**  
 HALTON LEA LIBRARY  
 4-6PM | FREE, DROP-IN  
 Come and celebrate Harry Potter Night. The theme this year is Hogwarts School of Witchcraft and Wizardry and we will have lots of Harry Potter themed activities for everyone to join in with. Chatterbooks is our regular reading group for 7-11 year olds and we are always looking for new members so join us for this exciting session of wizarding wonders!

**FRIDAY 8**  
**CSI EVENING WITH ASHLEY DYER**  
 WIDNES LIBRARY | 7-8.30PM | £3 | £2 LIBRARY MEMBERS  
 Book online via the library website or at your local library.  
 A fascinating evening looking at how the real forensic experts deal with a crime scene and how crime writers make sure they get the facts right. Examine the evidence at our 'crime scene' and chat with the writer and the forensic expert, Pit your wits against the experts in this fun, friendly event and see if you can find clues that could help to solve a major crime.

**FRIDAY 8**  
**THE HUT PEOPLE**  
 BRINDLEY | 8PM | STUDIO | £14  
 Instrumental folk duo.

**SATURDAY 9**  
**ANDREW DOYLE - FRIENDLY FIRE**  
 BRINDLEY | 8PM | STUDIO | £13, £10  
 One of the UK's foremost political satirists.



**SUNDAY 10**  
**CREEDENCE CLEARWATER REIMAGINED**  
 BRINDLEY | 7.30PM | THEATRE | £26, £25



**MONDAY 11**  
**CODE CLUB**  
 WIDNES LIBRARY | 10.30-12PM | FREE, DROP IN  
 The possibilities are endless at code club! Come along to learn the basics of coding with Scratch, code a Micro:bit and Codebug or play with the Code-a-pilla.

**MONDAY 11**  
**LEGO CLUB**  
 HALTON LEA LIBRARY | 10.30-12PM | FREE, DROP IN  
 Get creative with our Lego and practice becoming a master builder.

**MONDAY 11**  
**ALL YOU NEED IS LOVE**  
 Presented by Art in Motion  
 BRINDLEY | 7PM | THEATRE | £12

**MONDAY 11-TUESDAY 12**  
**OUTER SPACE**  
 NORTON PRIORY MUSEUM & GARDENS | 11AM – 4PM

**TUESDAY 12**  
**SPIRIT OF THE DANCE**  
 BRINDLEY | 7.30PM | THEATRE | £29  
 The international dance sensation that conquered the world.



**TUESDAY 12**  
**READ2DOGS**  
 WIDNES LIBRARY | 10.30-12.30PM | FREE  
 Book online via the library website or at your local library  
 Halton libraries is proud to welcome a special visitor, a reading dog. Research shows that young people can become nervous when reading in a group. Read2Dogs gives children who lack confidence or are reluctant readers the opportunity to read to a dog in a relaxed, informal setting in the children's library. Choose a book from the library and spend 10 minutes reading to the dog.  
 This event is expected to be very popular so booking is essential as places are limited.

**TUESDAY 12**  
**CODE CLUB**  
 HALTON LEA LIBRARY | 10.30-12PM | FREE, DROP IN  
 The possibilities are endless at code club! Come along to learn the basics of coding with Scratch, code a Micro:bit and Codebug or play with the Code-a-pilla.

**WEDNESDAY 13**  
**BOARD GAMES**  
 WIDNES AND HALTON LEA LIBRARY | 10.30-12PM | FREE, DROP IN  
 Get together all your friends and family to have fun with our board game selection – we have a wide variety including Articulate, Scrabble, Cluedo, the Game of Life and more.

## Search online...



You'll find information about a whole host of events and things for young people to do in the borough online at [board.halton.me/](http://board.halton.me/) which is updated regularly. Remember you can also follow us on Twitter @HaltonBC and Facebook (search for Halton Borough Council).





**THURSDAY 14**  
**LEGO CLUB**

WIDNES LIBRARY | 10.30-12PM | FREE, DROP IN  
Get creative with our Lego and practice becoming a master builder.

**THURSDAY 14**  
**K'NEX CLUB**

RUNCORN AND DITTON LIBRARY | 10.30-12PM | FREE, DROP IN  
Stimulate curiosity and imagination at our K'Nex club – what will you create?

**FRIDAY 15**  
**LOVE YOUR MICRO:BIT**

HALTON LEA LIBRARY | 10.30-12PM | FREE, DROP IN  
Join us in celebrating Valentine's Day by programming Micro:bits with a flashing heart or code your own message or animation. Suitable for beginners to coding aged 7 – 14 years.

**MONDAY 11 – FRIDAY 15 FEBRUARY 2019**  
**FEBRUARY HALF TERM WORKSHOPS**

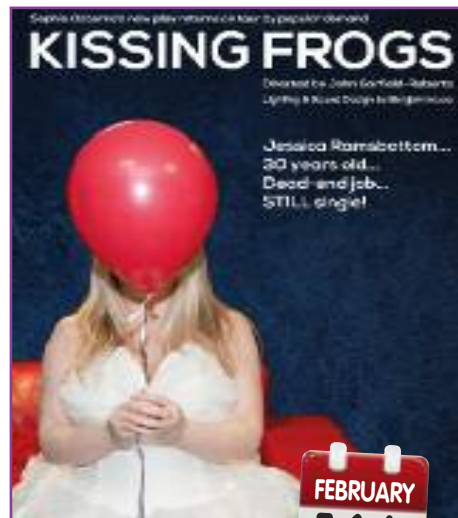
CATALYST MUSEUM  
Bee Discovery Workshops at 11am and 2pm  
Come and learn about one of nature's best scientists - the honeybee. Experiment with stings, learn about bee hives and make a buzzer so you can buzz like a bee!

Operation Earth Shows at 12 noon and 3pm  
Earthy is feeling under the weather and needs a check-up. Become a trainee environmental scientist and help us investigate in this fun, family show!

Tickets for the show or the workshops cost £1.25 per person in addition to the normal admission to Catalyst but they are limited and are sold in reception each day on a first come, first served basis.

**WEDNESDAY 13**  
**BOARD GAMES**

WIDNES AND HALTON LEA LIBRARY | 10.30-12PM | FREE, DROP IN  
Get together all your friends and family to have fun with our board game selection – we have a wide variety including Articulate, Scrabble, Cluedo, the Game of Life and more.



**SATURDAY 16**  
**KISSING FROGS**

BRINDLEY | 8PM | STUDIO | £13  
A funny journey of love, loss and self-discovery.

**SATURDAY 16 – SUNDAY 17**  
**ANNIE**

Presented by Ella Performance Group  
BRINDLEY | 7PM SAT, 2PM & 7PM SUN | THEATRE | £16

**MONDAY 18**  
**THE OWEN MCVEIGH FOUNDATION CHARITY SHOW**

BRINDLEY | 7PM | THEATRE | £15, £12

**MONDAY 18 – TUESDAY 19**  
**OUTER SPACE**

NORTON PRIORY MUSEUM & GARDENS | 11AM – 4PM  
Family fun for February half term with crafts and trails. Drop-in activities, no need to book. Activities are included in the normal museum admission prices.

**THURSDAY 21 – FRIDAY 22**  
**THE STRANGE CASE OF DR JEKYLL & MR HYDE**

Presented by Ginficent Theatre Company  
BRINDLEY | 7.45PM | THEATRE | £14, £12, £40 Family Ticket available

**THURSDAY 21 – SATURDAY 23**  
**OF MICE & MEN**

By John Steinbeck presented by Victoria Music Group  
BRINDLEY | 7PM | STUDIO | £13



**SATURDAY 23**

**LET'S HANG ON**  
BRINDLEY | 7.30PM | THEATRE | £26.50  
The world's first and longest-running tribute to Frankie Valli & The Four Seasons.

**SUNDAY 24**  
**TOYS IN THE HOOD**

BRINDLEY | 4.30PM | £10  
Dance show by Wild Dance Company.

**MONDAY 25**

**NOW OR NEVER VARIETY SHOW** Hosted by Adam Lawrenson  
BRINDLEY | 7.30PM | THEATRE | £16.50

**MONDAY 25**

**KEITH JAMES - THE SONGS OF LEONARD COHEN**  
BRINDLEY | 7.30PM | STUDIO | £18

**TUESDAY 26**

**LOCAL HISTORY TALK BY RUNCORN HISTORICAL SOCIETY: RUNCORN'S SHIPBUILDERS**

HALTON LEA LIBRARY | 6-7.30PM | FREE  
Book online via the library website or at your local library  
For many years, Runcorn was well-known for its shipyards and shipbuilders. Join us for this captivating talk by Runcorn Historical Society that will delve deep into the past of Runcorn's maritime history, its waterways, the vessels that sailed on them and the people that built them.

Runcorn Historical Society was founded in 2000 and hold meetings at St John's (Weston) Church Hall. They meet once a month for talks and events which relate to both the history of Runcorn and to that of the surrounding area. They also keep an archive which holds a growing number of documents, photographs and historical material.

**WEDNESDAY 27**

**THE FUREYS**  
BRINDLEY | 7.30PM | THEATRE | £24

**THURSDAY 28**

**THE TALKING DEAD** presented by Don't Go In to The Cellar  
BRINDLEY | 7.30PM | STUDIO | £14, £12  
Dare you share an evening with two of America's most infamous murderers?

**THURSDAY 28**

**JETHRO**  
BRINDLEY | 7.30PM | THEATRE | £22  
The Count of Cornwall is back again with his unique style of comedy.

**MARCH 2019**

**FRIDAY 1**

**MARILYN**  
BRINDLEY | 7.30PM | STUDIO | £18, £16  
Playful and poignant play about Marilyn Monroe.



**FRIDAY 1**

**CLARE TEAL-SWING'S THE THING**  
BRINDLEY | 7.30PM | THEATRE | £24.50

**SATURDAY 2**

**A FOREIGNER'S JOURNEY**  
BRINDLEY | 7.30PM | THEATRE | £17  
The hits of Journey and Foreigner.

VENUE	ADDRESS
Catalyst Museum	Mersey Road, Widnes
Hale Park	High Street, Hale, Liverpool
Hough Green Park	Royal Avenue, Widnes
Norton Priory Museum & Gardens	Tudor Road, Manor Park, Runcorn
Phoenix Park	Castlefields Ave East, Runcorn
Pickerings Pasture	Mersey View Road, Widnes
Rock Park	Union Street, Runcorn
Runcorn Hill	Highlands Road, Runcorn
Spike Island	Upper Mersey Road, Widnes
Halton Stadium	Lowerhouse Lane, Widnes
The Brindley	High Street, Runcorn
Town Park	Stockham Lane, Runcorn
Victoria Park	Fairfield Road, Widnes
Victoria Promenade	West Bank, Widnes
Wigg Island	Asmoor Road, Runcorn

**VENUE LOCATIONS**

**SATURDAY 2**

**GLENN WOOL - Wool's Gold II (The Iron Pirate)**  
BRINDLEY | 8PM | STUDIO | £16  
Award-winning comedian.

**THURSDAY 7**

**WORLD BOOK DAY: RHYMETIME**  
HALTON LEA LIBRARY | 11-11.45AM | FREE, DROP-IN  
World Book Day is a celebration of authors, illustrators, books and (most importantly) it's a celebration of reading. So come along to our special World Book Day rhymetime where we will share stories, have a sing-a-long and have fun. Go the extra mile and dress up as your favourite book character!

**WEDNESDAY 6 – SATURDAY 9**

**JOSEPH AND THE AMAZING TECHNICOLOR DREAMCOAT!**  
Presented by CODYS Productions  
BRINDLEY | 7.30PM, 2.30PM & 7.30PM SAT | THEATRE | £19, £17

**SATURDAY 10 – HALTON LEA LIBRARY**

**SATURDAY 16 – WIDNES LIBRARY**  
**BRITISH SCIENCE WEEK**  
10.30 - 11.45AM | FREE, DROP-IN  
Drop in to our free and fun science activities and join us in celebrating British Science Week. Learn how to make a sundial and we'll be flipping fish by bending light.

**FREE GUIDED WALKS**

Guided walks around Spike Island are now available - hear all about the Mersey Gateway Bridge and the environment around Spike Island now and in the past. The walks are run by Merseylink volunteers and should last no longer than one hour. All areas of the walks are DDA compliant and are suitable for people using pushchairs and wheelchairs. For more information, email [info@merseylink.com](mailto:info@merseylink.com) or call into the Mersey Gateway visitor centre in Catalyst Museum to speak to one of the volunteers.



**BRINDLEY CAFÉ**

The Café is located on the first floor with views of the boats and wildlife of the picturesque Bridgewater Canal. Relax in the café which serves delicious fresh homemade food, cakes and speciality coffees with FREE Wi-Fi. Opening hours: Mon-Fri 10am-4pm, Sat 10am-2pm, Closed Sun. Open one hour before show time and in the interval for most theatre shows. Free parking at The Brindley at all times.

# Council Meetings



DATE	TIME	MEETING	VENUE
<b>NOVEMBER 2018</b>			
28	6.30pm	Regulatory Committee	Runcorn Town Hall
<b>DECEMBER 2018</b>			
03	6.30pm	Development Control Committee	Municipal Building
12	6.30pm	Council	Runcorn Town Hall
13	11.30am	Executive Board	Municipal Building
<b>JANUARY 2019</b>			
07	6.30pm	Development Control Committee	Runcorn Town Hall
16	2.00pm	Health & Wellbeing Board	Halton Stadium
	4.00pm	Schools Forum	Municipal Building
	6.30pm	Regulatory Committee	Runcorn Town Hall
17	2.00pm	Executive Board	Municipal Building
28	6.30pm	Children Young People and Families PPB	Runcorn Town Hall
29	6.30pm	Corporate PPB	Runcorn Town Hall
<b>FEBRUARY 2019</b>			
04	6.30pm	Development Control Committee	Municipal Building
06	2.00pm	Standards Committee	Municipal Building
18	6.30pm	Employment Learning & Skills and Community PPB	Runcorn Town Hall
19	6.30pm	Safer PPB	Runcorn Town Hall
20	10.00am	Mayoral Committee	Municipal Building
21	2.00pm	Executive Board	Municipal Building
26	6.30pm	Health PPB	Runcorn Town Hall
27	6.30pm	Environment PPB	Runcorn Town Hall
<b>MARCH 2019</b>			
05	6.30pm	Development Control Committee	Runcorn Town Hall
06	6.30pm	Council	Runcorn Town Hall
13	6.30pm	Regulatory Committee	Runcorn Town Hall

## EXECUTIVE BOARD AND POLICY PERFORMANCE BOARDS

The Executive Board is the main decision making body of the Council and usually meets every month. The Policy & Performance Boards do not have decision making powers but are responsible for initiating new policy proposals, monitoring and commenting on policy proposals, and reviewing and recommending changes to existing policies. All the above meetings are open to the public and the Policy & Performance Boards include a 30 minute 'Question Time' at the start of each one. To be sure of receiving an answer at the meeting, you are advised to send your question in writing to Committee Services, Halton Borough Council, Municipal Building, Kingsway, Widnes, WA8 7QF before 4pm of the working day before your chosen meeting. Questions must relate to items on the agenda.

## Community Centres in the borough

**Castlefields Community Centre**  
Village Square, Castlefields,  
Runcorn WA7 2ST. Tel: 0151 511 7474

**Churchill Hall Community Centre**  
Cooper Street, Runcorn, Cheshire  
WA7 1DN. Tel: Reg Eastup, 01928 589848

**Grangeway Community Centre**  
Grangeway, Runcorn WA7 5HA  
Tel: 0151 511 8610

**Murdishaw Community Centre**  
Barnfield Avenue, Runcorn WA7 6EP  
Tel: 0151 511 7910

**Beechwood Community Centre**  
Beechwood Avenue, Runcorn  
Cheshire WA7 3HB.  
Tel: 01928 565014

**Brookvale Community Centre**  
Northwich Road, Brookvale, Runcorn  
Cheshire WA7 6PE

Tel: 01928 751699 / 01928 795171  
Email: rgates@arena-housing.com

**Halton Brook Community Centre**  
Meadway, Halton Brook, Runcorn  
Cheshire WA7 2DY. Tel: 01928 563441

**Palacefields Community Centre**  
The Uplands, Palace Fields, Runcorn  
Cheshire WA7 2UA. Tel: 01928 796235

**Ditton Community Centre**  
Dundalk Road, Widnes WA8 8DF  
Tel: 0151 511 8210

**Upton Community Centre**  
Hough Green Road, Widnes  
Cheshire WA8 4PF. Tel: 0151 511 6161

## IMPORTANT NUMBERS

### HALTON BOROUGH COUNCIL

For Council services between 8am and 6pm  
Mon-Fri dial 0303 333 4300.  
For emergencies outside these hours dial  
0333 000 4300.  
(Local call rate from any landline or mobile.  
Counts as inclusive minutes on mobile packages)

### POLICE

Emergencies dial 999. Non-emergencies 101.  
Contact your local neighbourhood officers via  
e-mail:  
Widnes - widnes.npu@cheshire.pnn.police.uk  
Runcorn - runcorn.npu@cheshire.pnn.police.uk  
To report a crime anonymously call  
Crimestoppers on 0800 555 111.

### FIRE

In emergencies dial 999  
Runcorn 01928 572811  
Widnes 0151 424 3091

### AMBULANCE

In emergencies dial 999  
Runcorn and Widnes 01244 381733

### EMERGENCY SOCIAL CARE SERVICES

(Daytime number is 0151 907 8306 for Adults and  
0151 907 8305 for Children) 0345 050 0148  
From 5pm Monday - Thursday and 4.30pm  
Friday, closing at 9am. 24 hours Saturday,  
Sunday and Bank Holidays.

### DOMESTIC ABUSE HELPLINE

Support Services 0300 1111247

### HOSPITALS

Halton General 01928 714567  
Warrington General 01925 635911  
Whiston 0151 426 1600

### NHS DIRECT

24-hour telephone no: 0845 4647

### PHARMACIES

To find your local pharmacy please visit  
[www.nhs.co.uk/service-search](http://www.nhs.co.uk/service-search)

### HALTON CLINICAL COMMISSIONING GROUP

Runcorn Town Hall 01928 593479

### HEALTH CENTRES AND CLINICS

**Runcorn:**  
Castlefields 01928 566671  
Hallwood 01928 593400  
Murdishaw Health Centre 01928 712061  
Windmill Hill 01928 842626  
Independent Living Centre 01928 582920  
Macmillan Nurses 01928 714927  
Grove House Practice 01928 566561  
Tower House Practice 01928 567404  
Weaverville Practice 01928 711911  
Brookvale Practice 01928 718182

### Widnes:

Bridges Learning Centre 0151 495 5300  
Chapelfield 0151 495 5200  
Widnes Health Care  
Walk In Centre, Widnes Health Care Resource  
Centre, Caldwell Road 0151 495 5000  
Open 7am - 10pm 7 days a week  
Mill Brow 0151 495 5250  
Halebanks Access Centre 0151 425 4950  
Woodview Child  
Development Centre 0151 495 5400  
Halton Healthy Living Project 0151 495 5450

### URGENT CARE CENTRE

Entrance 2  
Halton General Hospital  
Hospital Way, Runcorn, Cheshire WA7 2DA  
Telephone: 01928 714567



# Councillors' Surgeries



## APPLETON WARD

Cllrs E Jones, G Philbin and A Teeling (Labour). The first Saturday in each month 11.00am - 12 noon  
The Cafe, Victoria Park, Widnes

## BEECHWOOD WARD

Cllrs Chris Loftus and G Logan (Labour). The second Tuesday in each month 6.30pm - 7.30pm,  
Beechwood Community Centre, Runcorn

## BIRCHFIELD WARD

Cllrs M Fry, S Baker and B Woolfall (Labour)  
The first Tuesday in each month  
6.00pm - 7.00pm  
Birchfield Social Club, Birchfield Road, Widnes

## BROADHEATH WARD

Cllrs R Gilligan, T McDermott and K Morley (Labour). The first Tuesday in each month  
5.00pm - 6.00pm (Except August)  
Ashley School, Cawfield Avenue, Widnes

## DARESBURY WARD

Cllrs J Bradshaw and Mrs M Bradshaw (Conservative) will be happy to call on residents to discuss their concerns at their request throughout the ward. Please contact them on 01928 561813 or e-mail [john.bradshaw@halton.gov.uk](mailto:john.bradshaw@halton.gov.uk) and [marjorie.bradshaw@halton.gov.uk](mailto:marjorie.bradshaw@halton.gov.uk)

## DITTON WARD

Cllrs E Dourley, Mrs M Wright, and Joe Roberts (Labour). The first Thursday in each month 6.30pm - 7.30pm (Except May, August and December)  
Halebanks Youth Club, Baguley Avenue, Widnes  
The first Friday in each month  
10.30am - 11.30am (Except August and December)  
Halton Direct Link (Within Ditton Library) Queens Avenue, Widnes

## FARNWORTH WARD

Cllrs A MacManus, Mrs V Hill and Mrs A McInerney (Labour)  
The first Tuesday in each month (Except August)  
6.00pm - 7.00pm  
Birchfield Social Club, Birchfield Road, Widnes

## GRANGE WARD

Cllrs J Abbott, M Dennett and Mrs J Lowe (Labour)  
The Saturday, following the fourth Friday in each month 10.00am - 12 noon  
Runcorn Library, Granville Street, Runcorn

## HALE WARD

Cllr M Wharton (Labour)  
The Saturday, following the fourth Friday in each month  
9.30am - 10.00am  
Hale Youth Centre, High Street, Hale Village

## HALTON BROOK WARD

Cllrs S Nelson, Mrs C Plumpton Walsh and John Stockton (Labour)  
The Saturday, following the fourth Friday in each month (Except August and December)  
10.00am - 12 noon  
Runcorn Library, Granville Street, Runcorn.

## HALTON CASTLE WARD

Cllrs Mrs E Cargill, C Carlin and H Howard (Labour)  
Second Wednesday and the fourth Thursday in each month (except August for both dates. The fourth Thursday is not held in December)  
7.00pm - 8.00pm  
Castlefields Community Centre, Runcorn

## HALTON LEA WARD

Cllrs Mrs K Loftus, A Lowe and D Thompson (Labour).  
The 'Drop by' surgery is on the first Saturday morning of each month from 10am to 11am at Halton Lea Direct Link, Runcorn. Personal appointments at Halton Direct Link can be arranged for other times by contacting Halton Lea ward Councillors.

## HALTON VIEW WARD

Cllrs T McInerney, R Polhill and L Whitley (Labour)  
The fourth Thursday in each month (Except August and December)  
6.30pm - 7.30pm  
St. Ambrose Church Hall, Widnes

## HEATH WARD

Cllrs Gareth Stockton and C Rowe (Liberal Democrat)  
The third Saturday in each month (Except December)  
10.00am - 11.30am  
Eposito Café, Runcorn Hill Park

Cllr Charlotte Gerrard (Labour)  
The Saturday following the fourth Friday in each month (except August and December)  
10.00am - 12noon at Runcorn Library, Granville Street, Runcorn.  
The fourth Monday in each month (except August and December) 6.30pm - 7.30pm  
West Runcorn Youth Centre, Russell Road, Runcorn

## HOUGH GREEN WARD

Cllrs P Harris, P Nolan and K Wainwright (Labour)  
the third Thursday in each month  
7.30pm - 8.30pm  
Upton Community Centre, Widnes

## KINGSWAY WARD

Cllrs Mrs M Horabin and Mrs June Roberts (Labour)  
The first Thursday in each month  
6.00pm - 7.00pm  
Room 15, Library, Kingsway, Widnes

Cllr Mrs A Wall (Labour)  
For Kingsway residents convenience I operate an as and when needed surgery appointment system in order to avoid delays for residents. Please contact me on 07795 390979 or email: [andrea.wall@halton.gov.uk](mailto:andrea.wall@halton.gov.uk) to arrange a time and place convenient for you. In addition, the third Wednesday of each month 12.00pm-1.00pm  
St Paul's Community Centre, Vicarage Road, Widnes

## MERSEY WARD

Cllrs R Leck, N Plumpton Walsh and P Sinnott (Labour)  
The fourth Saturday in each month (Except August and December)  
10.00am - 12.00 noon  
Runcorn Library, Granville Street, Runcorn

## NORTON NORTH WARD

Cllrs L Cassidy, P Lloyd Jones and G Zygadllo (Labour) Every Thursday - 7.00pm - 7.30pm (Except August)  
Murdishaw Community Centre  
Barnfield Ave, Runcorn  
First Thursday of each month 6.15pm - 7.00pm (Except August)  
Brookvale Community Centre, Higher House (Rota basis with Norton South ward members)

## NORTON SOUTH WARD

Cllrs D Cargill, R Hignett and Mrs M Lloyd Jones (Labour)  
Every Thursday 7.00pm - 7.30pm (except August)  
Murdishaw Community Centre, Barnfield Ave, Runcorn  
First Thursday of each month, 6.15pm - 7.00pm (except August)  
Brookvale Community Centre, Higher House (Rota basis with Norton North ward members)

## RIVERSIDE WARD

Cllrs S Hill and Mrs P Wallace (Labour)  
The first Tuesday in each month (Except August)  
4.00pm - 5.00 pm - Ditton Community Centre.  
5.30pm - 6.30pm - Municipal Building, Kingsway, Widnes

## WINDMILL HILL WARD

Cllr P Hignett (Labour)  
The third Thursday in each month in rotation at two venues:  
2.30pm - 3.30pm  
Windmill Hill Children's Centre  
Norton Hill, Windmill Hill, Runcorn (July, September, November)  
2.30pm - 3.30pm Priory View, Southwood Avenue, Windmill Hill, Runcorn (July, August, October)

### Get about with us this Christmas

This Christmas, think how travelling with Halton Transport can help you make the most of the holiday season. Let us do the driving while you make the most of the festivities.

This year we will provide a special Sunday service for you up to 6.30 p.m. on **both Boxing Day and New Year's Day**.

Our routes serve Runcorn, Widnes, Liverpool, Warrington and St Helens for all those holiday outings, whether it's shopping for Christmas or at the sales, family visits, a Christmas show at Liverpool, Pantomime at the Brindley or a trip to the cinema... see below for our fantastic Fare Deals for individual or family travel and make the most of your local bus service this Christmas.

**During 2018** we have **improved** links between Runcorn and Widnes with **later buses** operating to and from Runcorn including new late evening service 61A. On services 14A and 14C linking **Windmill Hill and Hough Green** via Murdishaw, Castlefields and Shopping City we now have a bus up to every 10 minutes Monday to Saturday between the New Town and Hough Green and every 20 minutes to Liverpool.

**Halton Transport** is owned by Halton Borough Council for the people of Halton. Please support your **local** bus service and enable us to continue to keep your bus fares low, like these great offers:

**Day and weekly tickets are valid on all our services, wherever they go**

**Also valid on Arriva and HTL buses between Widnes and St Helens on service 17 only**

<b>Day Saver</b>	<b>Adult</b>	<b>£4.20</b>
	<b>Child</b>	<b>£2.10</b>
	<b>Family</b>	<b>£9.00</b>
<b>Weekly Saver</b>	<b>Adult</b>	<b>£15.00</b>
	<b>Child</b>	<b>£10.50</b>
	<b>Student</b>	<b>£14.50</b>

### **New flat fare for Runcorn Busway services**

On Halton Transport services 14A, 14C, 62 and 62A a new flat adult single fare of £2 applies on points around the Busway circle: Castlefields – Shopping City – Murdishaw – Windmill Hill

To all our loyal customers  
a safe and peaceful Christmas  
and a happy and prosperous  
New Year



**Free WiFi on  
all our buses!**

### **Christmas and New Year services 2018/9**

**Christmas Eve** Enhanced  
Saturday services until 20.30

**Christmas Day** No service

**Boxing Day** Sunday service  
between 09.00 and 18.30

**Thursday 27<sup>th</sup> to Friday 28<sup>th</sup>**  
Enhanced Saturday service

**Saturday 29<sup>th</sup> to Sunday 30<sup>th</sup>**  
Normal weekend services

**New Year's Eve** Enhanced  
Saturday service until 20:30

**New Year's Day** Sunday service  
between 09.00 and 18.30

**Wednesday 2nd January**  
Normal services resume

Find all our timetables,  
including special Christmas  
times, on our web site:

[www.haltontransport.co.uk](http://www.haltontransport.co.uk)

Always check times.  
All our bus times  
can be found online



**0151.423 3333**